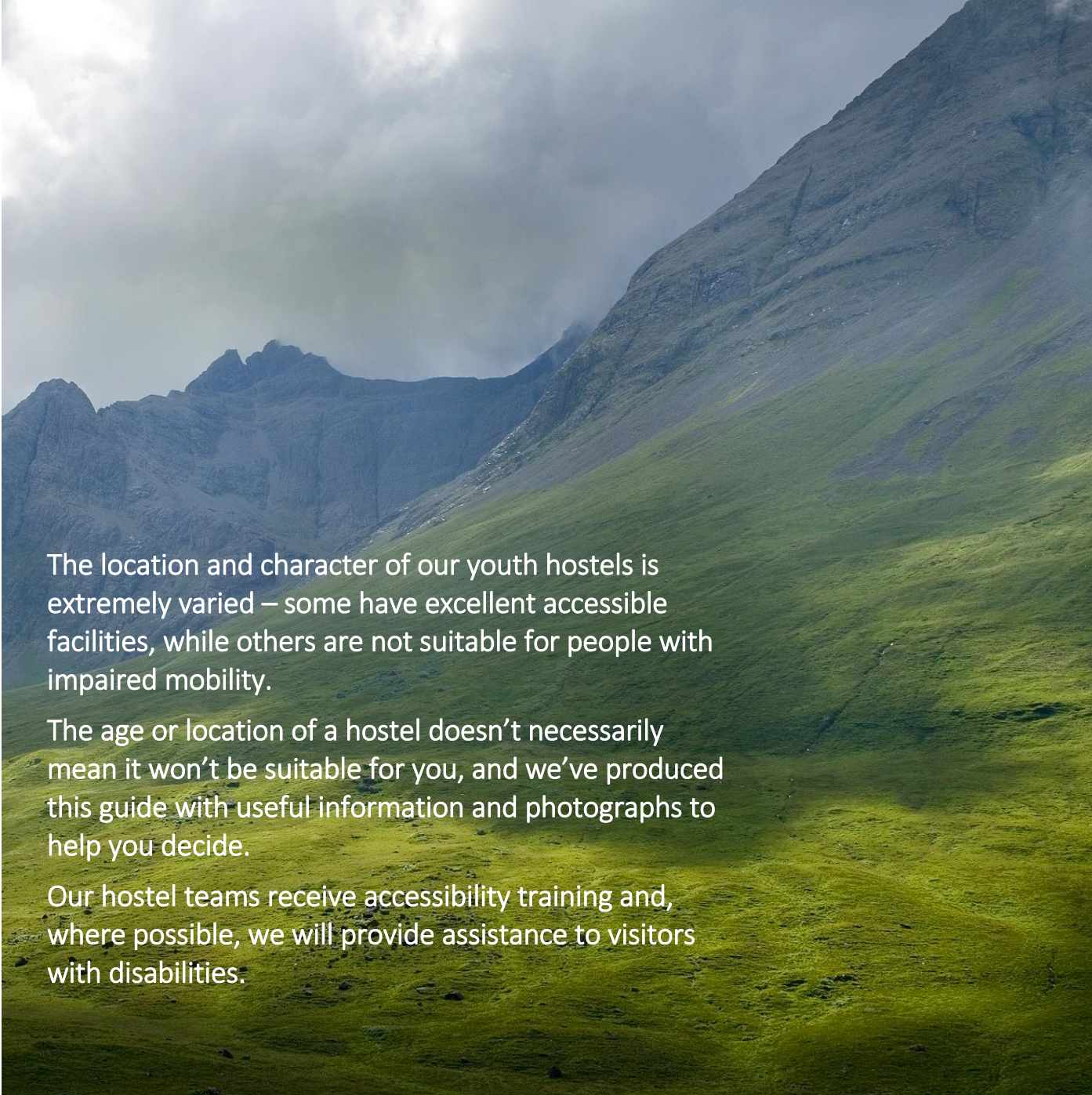




Hostelling  
Scotland

# HOSTELLING SCOTLAND ACCESS GUIDE

A guide to accessibility in  
our youth hostels across  
Scotland



The location and character of our youth hostels is extremely varied – some have excellent accessible facilities, while others are not suitable for people with impaired mobility.

The age or location of a hostel doesn't necessarily mean it won't be suitable for you, and we've produced this guide with useful information and photographs to help you decide.

Our hostel teams receive accessibility training and, where possible, we will provide assistance to visitors with disabilities.

All the youth hostels in our network are listed on the next page.  
Click the hostel name to be taken to the relevant section . .

**This Access Guide covers a total of 29 youth hostels in the Hostelling Scotland network.**

**Each section contains contact details for the hostel plus useful information about parking, public areas, bedrooms and general facilities.**

**Click on the name of the hostel you're interested in and you'll be taken to the relevant page.**

**To return to this list, click on the 'Back to index' link below the small photographs in each section.**

[Achmelvich](#)

---

[Aviemore](#)

---

[Broadford](#)

---

[Braemar](#)

---

[Cairngorm Lodge](#)

---

[Crianlarich](#)

---

[Durness](#)

---

[Edinburgh Central](#)

---

[Gairloch](#)

---

[Glasgow](#)

---

[Glen Affric](#)

---

[Glenbrittle](#)

---

[Glencoe](#)

---

[Glen Nevis](#)

---

[Inverness](#)

---

[Kirkwall](#)

---

[Loch Ossian](#)

---

[Lochranza](#)

---

[Oban](#)

---

[Perth](#)

---

[Pitlochry](#)

---

[Port Charlotte](#)

---

[Portree](#)

---

[Ratagan](#)

---

[Rowardennan](#)

---

[Stirling](#)

---

[Tobermory](#)

---

[Torridon](#)

---

[Ullapool](#)

---

# ACHMELVICH BEACH YOUTH HOSTEL

## Address

Lochinver, Lairg,  
Sutherland IV27 4JB

## Telephone

01571 844480

## Open

08.00-10.00 and 17.00-22.00  
Check-in from 17.00  
Checkout by 10.00

## Parking

Due to planned upgrades to the beach carpark, there will be restricted parking throughout the 2024 season. Alternative solutions are currently being explored and we will share more information when available.

## Local accessible taxi

Dial-a-bus Mon-Sat 09.30-17.30  
(Assynt only) 01571 844607

## Public transport

Please contact reception for further information.

## Dogs

Dogs are welcome, for a small fee, when you book a private room. Please advise us in advance.

## Main entrance / reception

The sandy path to the hostel from the car park is uphill and uneven. It goes through a 'kissing gate' then is gravelled. Please call youth hostel reception on 01571 844480 if you need assistance with luggage.

***Please note: mobile phone reception is limited.***

The hostel is effectively split into 3 buildings with 3 external entrances. Access is not all on a level.

There are 3 steps (no ramp or handrail) at the main entrance.

The main door is 80cm wide and firm to open with a push from the outside.

The floor in reception is uneven flagstone/concrete.

Reception is straight ahead and is very small (1.7m by 1.8m).

Toilets are only available in the buildings and all paths are uneven with several steps up and down.

At check-in, reception staff will explain where the various facilities are located.

They will also explain the door key and fire procedures and offer luggage assistance.

## Bedrooms

Two bedrooms are accessed through an external door, via small porch, then individual doors. One has a toilet and washbasin, the other only a washbasin.

Additional toilet/shower facilities require guests to go outside to separate facilities.

The annex has multiple 1 or 2 external steps up from the main entrance via a flagged pathway. Two bedrooms are accessed through an external door, via small porch, then individual doors.

The annex also has a separate toilet and a washroom with shower/toilet/sink.

Doors are 90cm wide.

Rooms have a chair and side table, some have comfortable seating. If you need more space, we can remove some items. Please contact reception before booking to check if furniture can be moved.

## Bathrooms

There are separate shower and toilet facilities accessed via multiple 1 or 2 external steps up from the main entrance via an uneven external pathway.



### Hall, stairs, landings, corridors

There are no halls/stairs/landings or corridors. Entry porches have standard ceiling lighting.

### Dining room/lounge

There is a guest lounge on the ground floor which seats 20 people.

The room has a mixture of seating with sofa, tub chairs, padded chairs and bar stools.

Access is via 1 step from reception.

Flooring is lino.

### Self-catering

The self-catering kitchen is on the ground floor.

- There are steps to the dining area and no fixed seating.
- The tables are 75cm high.
- The dining room has a lino floor.

Self-catering evening meals are available for varying dietary requirements – please enquire at the time of booking.

Breakfast is available – please pre-book.

### Laundry

There is no guest laundry available.

### Shop

There is a small shop on-site selling soft drinks, snacks and some grocery and toiletry items.

### Other useful information

- We do not have a set of evacuation procedures – if required, someone will come to your room and assist you.
- We welcome trained assistance dogs in some rooms. A water bowl is available just outside the front door for assistance dogs and can be supplied for bedrooms where necessary.
- The nearest hospital with an A&E unit is 98 miles away and the nearest doctor's surgery is 4.5 miles away. Please let us know if you require further information about these.
- WiFi access not available.
- We can offer a list of nearby attractions and suggested places to eat.



# AVIEMORE YOUTH HOSTEL

## Address

25 Grampian Road  
Aviemore PH22 1PR

## Telephone

01479 810 345

## Open

07.00-22.30  
Check-in from 16.00  
Checkout by 10.00

## Parking

There are 50 parking spaces available at the hostel. The spaces are 50m from the hostel entrance and the surface is level.

Call reception on 01479 810345 if you need assistance with luggage

## Local accessible taxi

01479 811 111

## Public transport

The bus and train stations are 400m north of the hostel

Please contact reception for further information

## Main entrance / reception

There is a ramp up to the entrance with a handrail on the right. The main door is 92cm wide and opens with a pull from the outside.

Reception is on your right. The floor is carpeted/vinyl. Access is all on one level.

A publicly-accessible toilet (no handrails) is available on the ground floor.

At check-in, reception staff will explain where the various facilities are located. They will also explain the door key and fire procedures and offer luggage assistance.

## Bedrooms

The youth hostel has 25 bedrooms, 1 of which is accessible. All bedrooms are on the ground floor, with level access from the front door.

All bedroom corridors are carpeted and are a minimum of 78cm wide. Doors are a minimum of 88cm wide.

Rooms have a chair and a cabinet. If you need more space, we can remove these. Please contact reception when you arrive to arrange for furniture to be moved.

A Deafguard vibrating pillow alarm is available for guest use free of charge. Please contact the hostel to reserve this in advance of your stay.

## Shower room

Our accessible room has an accessible bathroom just down the corridor.

- Door opening to the bathroom is a minimum of 67cm wide.
- Level entry, step free shower, fitted with grab rails.
- Toilet height is 40cm with grab rails.
- Wash basin height is 80cm.
- Non-slip flooring.

## Hall, stairs, landings, corridors

All public areas, halls and landings are well lit with ceiling and wall lights.

## Lounge 1

There is a guest lounge on the ground floor which seats 40 people. The room has a mixture of seating with sofas/soft chairs. Flooring is carpeted.

There is a widescreen television with remote control and subtitle facility and a pool table.

## Lounge 2 (Quiet Room)

There is a quiet room on the ground floor which seats 20 people.

The room has a mixture of seating with sofas/soft chairs.

Flooring is carpet.

There is a widescreen television with remote control and subtitle facility.



### Catering/self-catering

The dining area/self-catering kitchen is on the ground floor.

- The sink units, worktops and cooking hobs in the self-catering kitchen are 92cm high.
- There are sinks with lever taps.
- There are no steps to the dining area and there is no fixed seating.
- The dining tables are 74cm high.
- The dining room has a wooden floor.

We are able to cater for varying dietary requirements. Please advise us when making a booking.

- Breakfast is available – please pre-book.
- Packed lunches are available – please pre-book.
- Dinner may be available for groups of 20 and over groups. Please pre-book with at least 4 weeks' notice.

### Laundry

The guest laundry is located 50m from reception and access is level.

- Facilities include coin-operated washing/drying machines.
- Flooring is tiled.
- We have a large drying room.

### Shop

We have a small range of alcoholic and soft drinks and snacks.

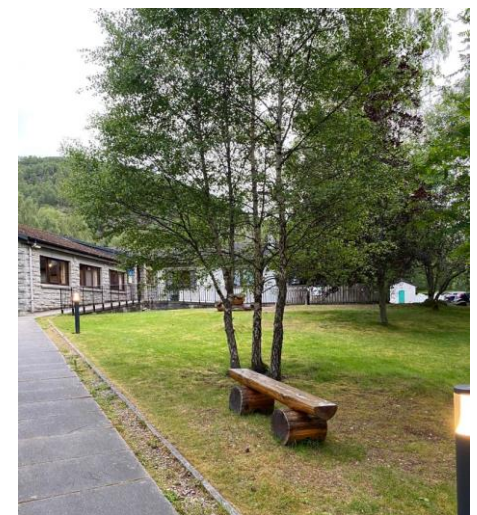
There is a 24 hour petrol station with shop approximately 0.3 miles down the road and a Tesco store 0.5 miles away.

### Conference and meeting event rooms

The youth hostel has meeting and event facilities which are available to hire (at a very reasonable cost) for private meetings and functions.

### Other useful information

- We have a set of evacuation procedures – if required, someone will come to your room and assist you.
- We welcome trained assistance dogs. A water bowl is available just outside the front door for assistance dogs and can be supplied for bedrooms where necessary.
- The nearest hospital with an A&E unit is 35 miles away and the nearest doctor's surgery is 1 mile away. Please let us know if you require further information about these.
- Free WiFi/internet access is available.
- We can offer a list of nearby attractions and suggested places to eat.
- Our staff receive accessibility training.



# BRAEMAR YOUTH HOSTEL

## Address

Corrie Feragie Lodge, 21 Glenshee Rd,  
Braemar AB35 5YQ

## Telephone

01339 741659

## Open

07.00-10.00 and 17.00-21.30  
(22.00 Fri/Sat)  
Check-in 17.00-22.00  
Checkout by 10.00

## Parking

There are 14 car parking spaces at the hostel, 40m from the entrance, up 20 steps. The car park surface is level gravel.

On-street parking is available nearby.

Please call reception on 01339 741659 if you need assistance with luggage.

## Local accessible taxi

Nearest taxi is 17 miles away in Ballater  
013397 55548.

## Public Transport

A regular bus service connects Braemar with Aberdeen, stopping at all Deeside villages en route. Stagecoach service number 201.

## Main entrance / reception

There are 2 steps to the entrance (no handrail).

The main door is 88cm wide and is easy to open with a push from the outside.

Reception is on the left and is carpeted.

Access not all on a level and there is no lift access to the upper floors.

At check-in, staff will explain where the various facilities are located. They will also explain the door key and fire procedures and offer luggage assistance.

## Bedrooms

The hostel has 10 bedrooms, none of which are on the ground floor.

There are 5 rooms on the first floor with bunk/single beds that are reached by stairs only.

All bedroom corridors are carpeted and are 88+cm wide. Doors are 75cm wide.

Rooms have a 'comfy' chair. If you need more space, we can remove these. Please contact reception once you have arrived to arrange for furniture to be moved.

No toilet facilities on the ground floor.

## Bathrooms

Door opening to the bathroom is 73cm.

- Toilet height is 43cm and washbasin height 84cm.
- Lever taps on some washbasins.

## Hall, stairs, landings, corridors

All public areas, halls, stairs and landings are well lit with ceiling lights.

There is short pile carpet on the stairs, hall and landing.

There is a non-continuous flight of 20 steps to the first floor with a handrail on one side.

## Lounge

There is a guest lounge on the ground floor which seats 16 people. It has a mixture of seating with sofas and chairs.

Access is level and flooring is carpet.

There is a widescreen television with remote control and subtitle facility.

## Catering/self-catering

The dining area/self-catering kitchen is on the ground floor.

- There are no steps dining area and there is no fixed seating.
- The tables are 76cm high.
- The restaurant/dining room has a laminate floor.

We are able to cater for varying dietary requirements. Please advise us when making a booking.

- Breakfast is available – please pre-book.



### Laundry

The laundry is located on the ground floor and access is level.

- Facilities include 2 token-operated washing/drying machines.
- Flooring is laminate.

### Shop

There is a small shop on-site selling confectionary, snacks and a limited stock of alcoholic drinks.

### Other useful information

- We have a set of evacuation procedures – if required, someone will come to your room and assist you.
- We welcome trained assistance dogs. A water bowl is available just outside the front door for assistance dogs and can be supplied for bedrooms where necessary.
- The nearest hospital with an A&E unit is 40 miles away and the nearest doctor's surgery is .75 miles away. Please let us know if you require further information about these.
- WiFi access is free.
- We can offer a list of nearby attractions and suggested places to eat.
- Our staff receive accessibility training.





# BROADFORD YOUTH HOSTEL

## Address

Broadford  
Isle of Skye IV49 9AA

## Telephone

01471 822442

## Open

08.00-10.30 and 17.00-21.30

Check-in from 17.00

Checkout by 10.00

## Car parking

There are no car parking spaces at the hostel, but on-street parking is available nearby, approx. 40m from the entrance.

Please call reception on 01471 822442 if you need assistance with luggage.

## Public transport

Caledonian MacBrayne operates ferry services to Skye – see [www.calmac.co.uk](http://www.calmac.co.uk)

Citylink runs regular coach services from Glasgow – see [www.citylink.co.uk](http://www.citylink.co.uk) - and Stagecoach runs local bus and coach services on the island – see [www.stagecoachbus.com](http://www.stagecoachbus.com)

## Dogs

Dogs are welcome, for a small fee, when you book a private room. Please advise us in advance.

## Main entrance / reception

There are 23 steps to the entrance, a mixture of gravel and paving stones.

There is a handrail on the right at the entrance. The main door is 130cm wide and is easy to open with a pull from the outside.

There are 3 steps to reception, which is straight ahead. The floor is laminate. Access not all on a level and there is no lift access to the upper floor.

There is an induction loop at reception.

A publicly-accessible toilet is available on the ground floor.

At check-in, staff will explain where the various facilities are located. They will also explain the door key and fire procedures and offer luggage assistance.

## Bedrooms

The youth hostel has 15 bedrooms, none on the ground floor and none suitable for guests with physical impairment.

On the first floor there are 3 rooms with single beds, reachable by stairs only.

All bedroom corridors are carpeted and are 100cm wide. Doors are 70cm wide.

Rooms have a chair. If you need more space, we can remove this. Please contact reception once you have arrived, to arrange for furniture to be moved.

## Bathrooms

Our washrooms offer the following:

- Door openings are 70cm.
- Toilet height is 40cm
- Washbasin height is 80cm.
- Flooring is non-slip.

## Hall, stairs, landings, corridors

All public areas, halls, stairs and landings are well lit with ceiling lights.

There is short pile carpet on the stairs, hall and landing.

There is a continuous flight of 16 steps to the first floor with a handrail on one side.

## Lounge

There is a guest lounge on the ground floor which seats 20 people.

The room as a mixture of seating with sofas and chairs. Flooring is carpet and access is via 3 steps.

## Catering/self-catering

The dining area and self-catering kitchen is on the ground floor access from entrance via 3 steps.

- There are no steps to the dining area and there is no fixed seating.
- The tables are 75cm high.
- The dining room has a laminate floor.



We are able to cater for varying dietary requirements. Please advise us when making a booking.

Continental breakfast is available – please pre-book.

### Laundry

The laundry is located on the ground floor and access from entrance is 3 steps.

- There is a sink with a mixture tap with twist controls.
- Facilities include 2 token-operated washing/drying machines tokens available at reception.
- Flooring is lino.

### Other useful information

- We have a set of evacuation procedures – if required, someone will come to your room and assist you.

- We welcome trained assistance dogs. A water bowl would be available just outside the front door for assistance dogs and can be supplied for bedrooms where necessary.
- The nearest hospital with an A&E unit is ½ mile away and the nearest doctor's surgery is ½ mile away. Please let us know if you require further information about these.
- Free WiFi access is available.
- We can offer a list of nearby attractions and suggested places to eat.
- Our staff receive accessibility training.



# CAIRNGORM LODGE YOUTH HOSTEL

## Address

Glenmore  
Aviemore PH22 1QY

## Telephone

01479 861238

## Open

07.30-10.00 and 17.00-22.30  
Check-in from 17.00  
Checkout by 10.00

## Parking

15 car parking spaces are available. These are 20m from the hostel entrance. The car park surface is tarmac, however the driveway is loose gravel and stones. There is on-street parking nearby.

## Local accessible taxi

01479 811111

## Public transport

Please contact reception for further information.

## Dogs

Dogs are welcome, for a small fee, when you book a private room. Please let us know in advance.

## Main entrance / reception

The main entrance to the hostel is at the front, with 4 steps and handrails.

The door is 74cm wide and easy to open with a push from the outside. It leads into a small vestibule with outdoor footwear storage.

Reception, with a small seating area, is straight ahead. It is carpeted and tiled.

There is a back door 106cm wide, but this can only be opened from inside.

The hostel is on 2 levels but there is no lift access to the upper floor.

There is a publicly-accessible toilet, with handrails, on the ground floor.

At check-in, reception staff will explain where various facilities are located. They will also explain the door key and fire procedures and offer luggage assistance.

## Bedrooms

The youth hostel has 13 bedrooms, 1 of which is accessible on the ground floor. The corridor to this room is tiled and a minimum of 134cm wide.

There are 5 other bedrooms on the ground floor, with level access from the back door up 1 stair and a pavement. The 7 rooms on the first floor are reached by stairs only.

Doors are a minimum of 70cm wide.

Rooms have at least one chair. Please contact reception when you have arrived at the hostel, to arrange for furniture to be moved.

A Deafgard vibrating pillow alarm is available for guest use free of charge. Please contact the hostel to reserve this in advance of your stay.

## Bathrooms

Our accessible room is NOT ensuite, but is located beside our accessible bathroom which has both a toilet and shower and offers the following:

- Door opening to the bathroom is a minimum of 84cm wide.
- Level entry, step free shower with a foldable shower stool and grab rails.
- Toilet, with grab rails, is 41cm high.
- Washbasin, with lever taps, is 78cm high.
- Tiled flooring, non-slip flooring in the shower cubicle.
- Toilet/shower room lights are switched on by a pull cord.

We have a variety of other toilets and showers throughout the hostel but no ensuite facilities.



### Hall, stairs, landings, corridors

All public areas, halls, stairs and landings are well lit with ceiling and wall lights.

There is short pile carpet on the stairs, hall and landing.

There are 2 flights of stairs split by a door halfway up on the middle landing. There is a handrail on the right side.

### Lounge

There is a guest lounge on the main floor which seats 16 people. The room has a mixture of seating with sofas and soft chairs.

We have no TV reception at Cairngorm Lodge but have a large selection of movies.

Flooring is carpet. Access is level.

### Quiet room

There is a guest quiet room on the main floor that seats 8 people.

The room has a mixture of seating with sofas and soft chairs.

Flooring is carpet. Access is level.

### Catering/self-catering

The restaurant, dining area and self-catering kitchen is on the ground floor.

- The sink units, worktops and cooking hobs in the self-catering kitchen are 90cm high.

- Crockery and utensil storage is located on a kitchen island at a height of 90cm.
- There are no steps to the restaurant/dining area and there is some fixed seating.
- The dining tables are 74cm high.
- The restaurant/dining room has a tiled floor.
- We are able to cater for varying dietary requirements. Please advise us when making a booking.
- Breakfast is available – please pre-book or book on arrival.
- Packed lunches are available – please pre-book or book on arrival.
- Dinner is available – please pre-book or book on arrival.

### Laundry and drying room

The guest laundry and drying room are located on the main floor and access is level.

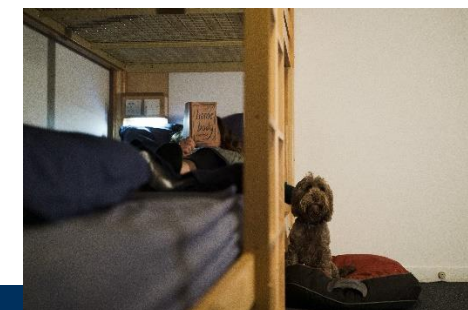
- The sink unit and worktops are 93cm high.
- Facilities include two coin-operated washing/drying machines.
- Flooring is tiled.

### Shop

There is a very small shop at reception selling toiletries, sweets, crisps, water and some souvenirs.

### Other useful information

- We have a set of evacuation procedures – if required, someone will come to your room to assist you.
- We welcome trained assistance dogs.
- The nearest hospital with an A&E unit is 38 miles away and the nearest doctor's surgery is 7 miles away. Please let us know if you require further information about these.
- WiFi access is free.
- We can offer a list of nearby attractions and suggested places to eat.



# CRIANLARICH YOUTH HOSTEL

## Address

Station Road,  
Crianlarich FK20 8QN

## Telephone

01838 300 260

## Open

07.30-21.30  
Check-in from 16.30  
Checkout by 10.00

## Parking

There are 23 car parking spaces approx. 20m from the entrance to the hostel, which is at the front.

The car park surface is tarmac.

On-street parking is available nearby.

Please call reception on 01838 300 260 if you need assistance with luggage

## Local accessible taxi

01838 300 307

## Public transport

Please contact reception for further information.

## Dogs

Dogs are welcome, for a small fee, when you book a private room. Please advise us in advance.

## Main entrance / reception

There is a ramp up to the entrance with a handrail on both sides.

The main door is 33cm wide, extending to 42cm to allow for wheelchair access, and is firm to open with a pull from the outside.

Reception is on your left and is carpeted.

There is no lift access to the upper floor.

A publicly-accessible toilet is available on the ground floor. This has handrails.

At check-in staff will explain where the various facilities are located. They will also explain the door key and fire procedures and offer luggage assistance

## Bedrooms

The youth hostel has 14 bedrooms, 1 of which is accessible for wheelchairs. This room is a triple en-suite with 1 single bed and 1 bunk.

8 bedrooms on the ground floor have level access from the front door.

All bedroom corridors are carpeted and are a minimum of 29cm and maximum of 33cm wide.

Doors are a minimum of 28.5cm wide and maximum of 33cm wide

Rooms have a chair and desk. If you need more space we can remove these items. Please contact reception when you arrive at the hostel, to arrange for furniture to be moved.

A Deafguard vibrating pillow alarm is available for guest use free of charge. Please contact the youth hostel to reserve this in advance of your stay.

## Bathrooms

Our accessible room is en-suite and offers the following:

- Door opening to the bathroom is a minimum of 33cm wide.
- Level entry, step free shower.
- Toilet height is 16.5cm.
- Washbasin, with lever taps, is 29.5cm high.
- Horizontal grab rails are fitted around the shower
- Horizontal and vertical grab rails are fitted either side of the toilet.
- Non-slip flooring.

## Hall, stairs, landings, corridors

All public areas, halls, stairs and landings are well lit with ceiling and wall lights and short pile carpet.

There is a continuous flight of steps to the first floor with a handrail on one side.



### Lounge 1

There is a guest lounge on the ground floor which seats 23 people.

The room has a mixture of seating with sofas/soft chairs/high chairs.

Access is level. Flooring is carpet.

There is a widescreen television with remote control and subtitle facility.

### Catering/self-catering

The restaurant / dining area / self-catering kitchen is on the ground floor with level access.

- The sink units, worktops and cooking hobs in the self-catering kitchen are 36cm high.
- Crockery and utensil storage is located in floor units at a height of 37cm.
- The dining tables are 28.5cm high.
- The dining room has a lino floor.

We are able to cater for varying dietary requirements. Please advise us when making a booking.

- Cooked breakfast is available for groups of 20 or more – please pre-book.
- Continental breakfast is available – please pre book.
- Packed lunches are available – please pre-book.

- Dinner may be available for groups of 20 or more – please book in advance.
- Heat and eat self-cook meals are also available.

### Laundry

The guest laundry is located opposite reception and access is level.

- There are no sinks available.
- Facilities include a coin-operated washing/drying machine.
- Flooring is non slip lino.

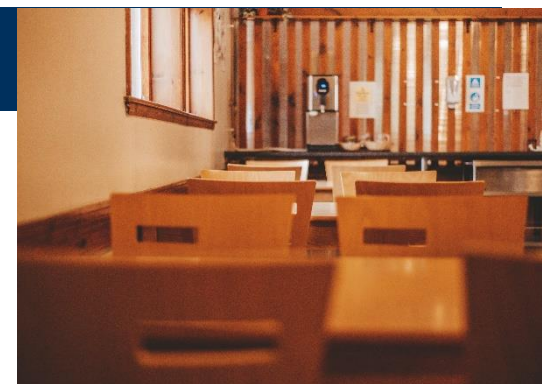
### Shop

There is a small shop on-site with a limited stock of food, alcohol and other essentials for sale.

### Other useful information

- We have a set of evacuation procedures. If required, someone will come to your room and assist you.
- We welcome trained assistance dogs. A water bowl is available just outside the front door for assistance dogs and can be supplied for bedrooms where necessary.
- The nearest hospital with an A&E unit is 53.5 miles away and the nearest doctor's surgery is 14 miles away. Please let us know if you require further information about these.

- WiFi access is free.
- We can offer a list of nearby attractions and suggested places to eat.
- Our staff receives accessibility training.



# DURNESS SMOO YOUTH HOSTEL

## Address

Durness, Lairg IV27 4QA

## Telephone

01971 511264

## Open

08.00-10.00 and 17.00-22.00

Check-in from 17.00

Checkout by 10.00

## Parking

There are 8 parking spaces 20m from the hostel. Surface is uneven. Guests can use the Smoo Caves car park nearby.

## Public transport

D&E Coaches run a service to Durness from April-September Mon-Sat (July & August also Sundays). Buses will stop at the hostel on request.

Please contact reception for further information.

## Dogs

Dogs are welcome, for a small fee, when you book a private room. Please let us know in advance.

## Main entrance / reception

There are 5 steps to the entrance (no ramp or handrail).

Please call reception on 01971 511264 if you need assistance with luggage.

The main door is 80cm wide and is firm to open with a push from the outside.

Reception is on your left. Floor is tiled. Access is on a level.

Facilities are in 2 separate buildings:

- Building 1 contains the dining room, kitchen, lounge and toilet.
- Building 2 contains accommodation and washrooms. There are 2 steps up to enter the building (no handrail). There is one further door to reach the corridors from which 4 bedrooms and washrooms are directly accessible. There are no further steps within the building.

There is a guest toilet on the ground floor. This does not have handrails.

At check-in, reception staff will explain where the various facilities are located. They will also explain the door key and fire procedures and offer luggage assistance.

## Bedrooms

There are 4 bedrooms on the ground floor, all with level access from the front door.

All bedroom corridors are 80cm wide and carpeted. Doors are 80cm wide.

Private rooms have a chair and desk, and a 'comfy' chair. If you need more space, we can remove these items. Please contact reception once you have arrived at the hostel, to arrange for furniture to be moved.

## Bathroom

- Door opening to the bathroom is 70cm
- There is a step into the shower
- Toilet height is 40cm
- Washbasin height is 80cm
- Flooring is non-slip.

## Hall, stairs, landings, corridors

There are no stairs or landings. All public areas are well lit.

## Lounge

The guest lounge is accessed via the dining room (no doors) and seats 15. Flooring is carpet tiles.

The room has a mixture of seating with sofas/soft chairs/high chairs.



### Catering/self-catering

The self-catering kitchen and dining room is on the ground floor. Access is from reception, via 1 door.

- There are no steps to the dining area.
- The tables are 70cm high.
- The dining room has a tiled floor.
- We are able to cater for varying dietary requirements. Please advise us when making a booking.
- Breakfast is available – please pre-book.
- Heat and eat meals are available – please enquire at the time of booking.

### Laundry

The laundry is in reception and not publically accessible. Please enquire at time of booking.

### Shop

There is a small shop in reception selling soft drinks, snacks and some grocery and toiletry items.

We also have an alcohol licence.

### Other useful information

- The nearest hospital with an A&E unit is 115 miles away and the nearest doctor's surgery is 1 mile away. Please let us know if you require further information about these.
- WiFi access is free.
- We can offer a list of nearby attractions and suggested places to eat.





# EDINBURGH CENTRAL

## Address

9 Haddington Place  
Edinburgh EH7 4AL

## Telephone

0131 524 2090

## Open

24 hours  
Check-in from 16.00  
Checkout by 10.00

## Parking

There is no parking at the youth hostel, though there are limited Pay & Display spaces nearby and at Greenside Car Park

## Local accessible taxi

0131 229 2468  
[www.taxis-edinburgh.co.uk](http://www.taxis-edinburgh.co.uk)

## Public transport

The nearest bus station is at Elder Street and St Andrew Square 500m away. There is a bus stop at 130m. For bus times see website [www.lothianbuses.com](http://www.lothianbuses.com). Waverley Railway Station is 800m away  
Please contact reception for further information

## Main entrance / reception

The main door is 92cm wide and is firm to open with a pull from the outside. There's also a revolving door that works manually.

There is a wheelchair access door with a push plate to activate entry.

Reception is straight ahead and has a lounge seating area for guests. The floor is tiled and carpeted.

Access is on the level and there is lift access to all floors.

Please contact us to reserve one in advance of your stay. Our accessible rooms are all fitted with automatic loop devices.

A publicly-accessible toilet is available on the ground floor. We have one designated disabled toilet fitted with handrails and an emergency alarm system.

At check-in, reception staff will explain where the various facilities are located. They will also explain the door key and fire procedures and offer luggage assistance.

## Bedrooms

The hostel has 71 bedrooms, all accessible by lift or the stairwell. There are no bedrooms on the ground floor.

We have 4 floors of accommodation with various configurations from 1 person up to 6 person rooms.

All bedroom corridors are carpeted and are a minimum of 148cm wide. Doors are a minimum of 82cm wide.

## Bathrooms

All of our accessible rooms are en-suite and offer the following:

- Door opening to the shower pod is 81cm wide.
- Step-in shower with a step threshold height of 18cm.
- Toilet height is 43cm.
- Wash basin height is 92cm.
- Lever taps are fitted on the washbasin.
- Non-slip flooring.
- Toilet and shower room lights are movement activated.

## Hall, stairs, landings, corridors

All public areas, halls, stairs and landings are well lit with ceiling and wall lights.

There is short pile carpet in all corridors, stairwells and bedrooms.

There are two lifts on each floor, both with non-slip flooring.

There is a continuous staircase to all five floors, with a handrail on one side.



### Lounge area

On the ground floor at reception there is a seated area with a selection of modern sofas and lounge chairs for up to 25 people. Floor is tiled. There are 2 widescreen televisions with remote control and subtitle facility.

### Catering/self-catering

The restaurant and Haddington Place Café are located on the ground floor.

The café serves teas, coffees, soft and alcoholic drinks. Our chefs prepare fresh cakes and scones daily.

Our self-catering kitchen on the lower ground floor has non-slip laminate flooring.

- The sink units, worktops and cooking hobs are 89cm high.
- Sink has lever taps.
- Crockery and utensil are stored on a freestanding unit at a height of 89cm.
- There are no steps to the restaurant. The dining area has no fixed seating.
- The dining tables are 74cm high.
- The restaurant and Haddington Place Café has floor tiles.
- The self-catering dining room has wooden laminated non-slip flooring.

We cater for various dietary requirements. Please advise us when booking.

- Breakfast is available – please pre-book.
- Packed lunches are available – please pre-book.
- Group meals are only available in the evening for parties of 20 people or more. These should be booked at least 3 days in advance.

### Laundry

The guest laundry is on the lower ground floor with access via the lifts or stairwell.

- There is a sink with lever taps.
- The sink and worktops are 82cm high.
- Laundry facilities include 2 token-operated washing/drying machines.
- Flooring is non-slip laminate.

### Reception retail

Basic products such as toiletries are on sale. Hairdryers, irons and board games are available (deposit required).

### Conference and meeting event rooms

Meeting and event facilities are available to hire for both corporate functions and private gatherings.

Hardware includes a ceiling mounted projector, remote control projection screen and entertainment system.

There is an induction loop in the conference room.

### Other useful information

- We have a set of evacuation procedures – if required, someone will come to your room and assist.
- The nearest hospital with an A&E unit is 5 miles away and the nearest doctor's surgery is behind the hostel. Please let us know if you require further information about these.
- Wi-Fi access is free.
- We can offer a list of nearby attractions and suggested places to eat.
- Our staff receive accessibility training.



# GAIRLOCH SANDS YOUTH HOSTEL

## Address

Carn Dearg, Gairloch, Ross-shire IV21 2DJ

## Telephone

01445 712219

## Open

08.00-10.00 and 17.00-22.00

Check-in from 17.00

Checkout by 10.00

## Parking

The main (east) car park, 20m from the entrance, is level gravel and has capacity for 9 cars. The overflow (west) car park is uneven and stony.

## Local accessible taxi

Please contact reception for information.

## Public transport

Nearest bus stop is 2 miles away (to the east) at Strath.

## Dogs

Dogs are now welcome, for a small fee, when you book a private room. Please let us know in advance.

## Main entrance / reception

Path from car park is uneven gravel. There are 10 steps (no handrail or ramp) up to the entrance door.

The main door is 83cm wide and firm to open with a push. It opens into an inner porch with a further 3 steps up into the hallway.

Reception is on the right. Flooring is vinyl with carpet in the main hallway.

Access is not all on one level and there is no lift access to upper floors

There is a toilet on the ground floor annex only accessible via 4 doors. There are 2 steps (no handrail) down to this level.

At check-in, staff will explain where the various facilities are located. They will also explain the door key and fire procedures and offer luggage assistance.

## Bedrooms

There are 2 bedrooms on the ground floor, one with level access from the hallway and one in the annex, via 4 doors and 2 steps down.

On the first floor there are 2 rooms with bunk beds that are reached by stairs.

On the second floor, reached by steep stairs only, there are 2 rooms. One has bunk beds and a double bed while the other has a single bed and a double bed.

All bedroom corridors are carpeted. The main hallway is 110cm wide (at the narrowest point). The first floor landing is 75cm wide (at the narrowest point). The second floor landing is 80cm wide. Bedroom doors are at least 79cm wide. Rooms have stools or chairs. If you need more space, we can remove these items. Please contact reception once you have arrived at the hostel, to arrange for furniture to be moved.

## Bathrooms

- Bathroom door opening is 75cm.
- Washbasin height is 83cm and toilet height is 45cm (no grab rails).
- There is a step up to the showers (no grab rails).
- Please note: there are no bathrooms/toilets on the 2<sup>nd</sup> floor.

## Hall, stairs, landings, corridors

All public areas, halls, stairs and landings are well-lit with ceiling lights.

There is short pile carpet on the stairs, hall and landing.

There are 2 flights of steps to the first floor, 12 steps to a small landing, then 6 steps to the first floor level, with a handrail on one side.

There is one continual flight of 17 steps to the second floor.



### Lounge

There is a guest lounge on the ground floor seating 15 people. The room has a mixture of seating with sofas/soft chairs/high chairs.

Access is level from the hall. Flooring is carpet.

### Catering/self-catering

- The dining room is on the ground floor. Access is from the hall, with no steps to the dining area and no fixed seating.
- The tables are 72cm high.
- The dining room has a lino tile floor.
- The self-catering kitchen is on the ground floor, accessed via 2 steps from the dining room (no handrail).

We are able to cater for varying dietary requirements. Please advise us when making a booking.

- Breakfast is available – please pre-book.
- Self-cater evening meals are available – please enquire at the time of booking.

### Laundry

The laundry is located in the ground floor annex via 4 doors and 2 steps down from the hall. Flooring is tile.

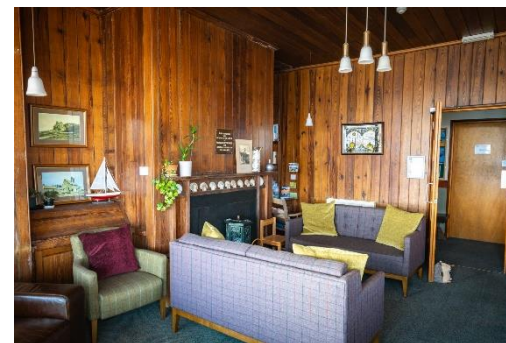
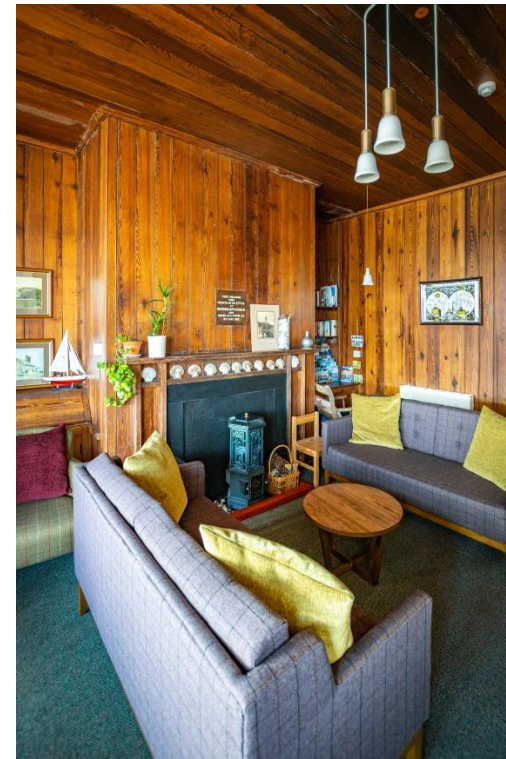
There is a coin-operated washer/dryer, but no sinks in the laundry/drying room.

### Shop

There is a small shop on-site.

### Other useful information

- We have a set of evacuation procedures – if required, someone will come to your room and assist you.
- We welcome trained assistance dogs
- The nearest hospital with an A&E unit is 74 miles away and the nearest doctor's surgery is 3 miles away. Please let us know if you require further information about these.
- WiFi access is free.
- We can offer a list of nearby attractions and suggested places to eat.



# GLASGOW YOUTH HOSTEL

## Address

7/8 Park Terrace  
Glasgow G3 6BY

## Telephone

0141 332 3004

## Open

24 hours  
Check-in from 16.00  
Checkout by 10.00

## Car parking

Car parking is not available at the youth hostel. On-street parking is available outside the hostel for £4 per day Monday to Friday

Please call reception on 0141 332 3004 if you need assistance with luggage

## Local accessible taxi

0141 557 1110  
Network hire

## Public transport

Please contact reception for further information

## Dogs

Dogs are welcome, for a small fee, when you book a private room. Please advise us in advance.

## Main entrance / reception

There are 7 steps to the entrance. There is no ramp or handrail. The main door is 90cm wide and is firm to open with a pull from the outside.

Reception is on your right and the floor is carpeted. There is no induction loop.

An accessible toilet with handrails is available on the ground floor.

There is no lift access to the upper floors.

At check-in, reception staff will explain where the various facilities are located. They will also explain the door key and fire procedures and offer luggage assistance.

## Bedrooms

The hostel has 32 bedrooms, none of which are accessible. There are no bedrooms on the ground floor.

On the first floor there are 13 rooms with double and single beds that are reached by stairs only.

All bedroom corridors are carpeted and doors are at least 80cm wide. Rooms have a chair and table. If you need more space we can remove them. Please contact reception when you arrive to request this.

## Bathrooms

Our rooms are en-suite and offer the following:

- Door opening to the bathroom is a minimum of 75cm wide.
- Step-in shower with a step threshold height of 12cm.
- Toilet height is 44cm.
- Wash basin height is 83cm.

## Hall, stairs, landings, corridors

All public areas, halls, stairs and landings are well lit with ceiling and wall lights. There is short pile carpet on the stairs, hall and landing.

There is a continuous flight of 15 steps to the first floor Annex with a handrail on one side.

## Lounge 1

A guest lounge on the ground floor seats 20 people. The room has a mixture of seating with sofas and soft chairs. Flooring is carpet.

## Lounge 2 (TV Room)

A guest TV room on the Annex floor seats 15 people. The room has sofas and chairs. Access is via 7 steps. Flooring is carpet. There is a widescreen television with remote control and subtitle facility.



### Games Room

There is a Games Room with a pool table and jukebox. The room has seating, with sofas and chairs for 12 people. Access is via 7 steps from reception. Flooring is carpet and wood.

### Conference and Meeting Event Rooms

Glasgow Youth Hostel has meeting and event facilities which are available to hire (at very reasonable cost) for both corporate functions and private gatherings.

Hardware includes screen, projector, Wi-Fi and flip chart.

### Catering/self-catering

The catered dining room and self-catering dining/kitchen are in the basement.

- The sink units, worktops and cooking hobs in the self-catering kitchen are 83cm high. There are sinks with turn taps.
- Crockery and utensil storage is in floor units at a height of 83cm.
- There are steps to the dining area and there is no fixed seating.
- The dining tables are 73cm high.
- The restaurant and dining room has a wooden and lino floor.

We are able to cater for varying dietary requirements. Please advise us when making a booking.

- Breakfast is available – please pre-book.
- Packed lunches are available – please pre-book.
- Dinner may be available – please enquire at the time of booking.

### Laundry

The laundry is located up from reception and has 9 steps. Please ask if you require assistance.

- Flooring is lino.
- The sink, with turn taps, and worktops are 89cm high.
- Facilities include 2 token-operated washing/drying machines. A drying room is available for guest use. The height of the rail is 210cm.

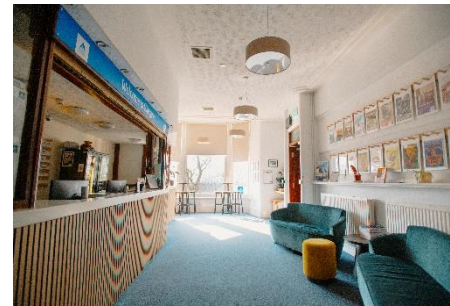
### Shop

There is a small shop available at reception where you can buy sweets, alcohol, a selection of travel items and towel hire.

### Other useful information

- We have a set of evacuation procedures – if required, someone will come to your room and assist you.

- We welcome trained assistance dogs. A water bowl is available just outside the front door for assistance dogs and can be supplied for bedrooms where necessary.
- The nearest hospital with an A&E unit is 0.7 miles away and the nearest doctor's surgery is 0.7 miles away. Please let us know if you require further information about these.
- We can offer a list of nearby attractions and suggested places to eat.
- WiFi access is free
- Discounted membership is available for families.
- Our staff have received accessibility training.



# GLEN AFFRIC YOUTH HOSTEL

## Address

Allt Beithe, Glen Affric, Cannich,  
Beauly IV4 ND

## Telephone

There is no phone or mobile phone signal at the hostel, or any phone reception in the glen (except on some mountain tops).

## Open

07.00-10.30 and 17.00-22.00  
Check-in from 17.00  
Checkout by 10.00

**This hostel is very remote and not suitable for people with impaired mobility.**

**Any parking is 9 miles away and access is on foot or mountain bike only.**

## Main entrance / reception

There are 2 steps to the entrance (no handrail).

The main door is 75cm wide and is firm to open with a pull from the outside.

Reception is on your right and the floor is carpeted.

Access is all on a level.

At check-in, staff will explain where the various facilities are located. They will also explain the door key and fire procedures and offer luggage assistance.

## Bedrooms

The hostel has 4 bedrooms – 2 two-bedded in the main building and 2 ten-bedded, which are 20m away in a separate building. None are suitable for people with impaired mobility.

All bedroom corridors have carpet/wood flooring and are 110cm wide.

Doors are 75cm wide.

Rooms have a chair and small table. If you need more space, we can remove these items.

## Bathrooms

There are 2 flushing toilets, 1 indoors and 1 outdoors. Each dorm has a cold water washbasin and no heating.

## Hall, stairs, landings, corridors

All public areas are well lit with ceiling lights and carpet/wooden flooring.

## Lounge

There is a guest lounge on the ground floor which seats 12 people.

The room has a mixture of seating with fitted benches and dining chairs

Access is level and flooring is carpet

## Self-catering only

The self-catering kitchen is on the ground floor. There are 2 hobs, 1 oven and grill, but no fridge or microwave.

- The tables are 75cm high.
- The dining room has lino floor.

## Laundry

There are no laundry facilities at the hostel, though a small drying area is available.

## Shop

There is a small shop on-site, selling soft drinks, juices, chocolate, crisps, healthy snacks and a selection of pouch meals.



**Other useful information**

- Sleeping bag is essential (3-4 season). Basic army blankets are provided at the hostel for emergencies
- Pillow cases are available to hire.
- You are recommended to bring the following:  
torch, towel, toiletries (preferably eco-friendly), slippers/indoor footwear, basic food & drink supplies, map and compass, warm clothes and wet weather gear, insect repellent (June-Sept)
- Toilet rolls, etc, are provided, but there is no linen/towel hire available (apart from pillow case hire).

- We have a set of evacuation procedures – if required, someone will come to your room and assist you.
- The nearest hospital with an A&E unit is 50 miles away and the nearest doctor's surgery is 25 miles away. Please let us know if you require further information about these.





# GLENBRITTLE YOUTH HOSTEL

## Address

Glenbrittle, Carbost,  
Isle of Skye IV47 8TA

## Telephone

01478 640278

## Open

08.00-10.00 and 17.00-22.00  
Check-in from 17.00  
Checkout by 10.00

## Parking

There is no specific car parking spaces, but off-road parking is available in front of the hostel, approx. 20m from the entrance.

Please call reception on 01478 640278 if you need assistance with luggage.

## Accessible taxi

Not available.

## Public transport

The nearest bus stop is 15 miles away at Sligachan.

There is no public transport to or from Glenbrittle.

## Main entrance / reception

Access to the hostel entrance is via a gravel path. There are 4 steps to the door, with a handrail on both sides.

The main door is 90cm wide and is easy to open with a push from the outside.

Reception is straight ahead, with level access, and flooring is lino. There is no lift access to the upper floor.

There is an induction loop at reception.

A publicly-accessible toilet (no handrail) is available in the outhouse.

At check-in, staff will explain where various facilities are located. They will also explain the door key and fire procedures and offer luggage assistance.

## Bedrooms

The youth hostel has 5 bedrooms, none of which are adapted for accessibility.

There are no bedrooms on the ground floor. On the first floor there is one room with single beds, reached by stairs only.

All bedroom corridors are carpeted and are 100cm wide. Doors are 70cm wide.

Rooms have a chair. If you need more space, we can remove these items. Please contact reception once you have arrived, to arrange for furniture to be moved.

## Bathrooms

Our washrooms offers the following:

- Door opening to the bathroom is 70cm wide.
- Toilet height is 40cm.
- Washbasin height is 80cm.
- Non-slip flooring.

## Hall, stairs, landings, corridors

All public areas, halls, stairs and landings are well lit with ceiling lights.

There is lino on the stairs and landing.

There is a continuous flight of 16 narrow steps with a sharp right angle to the first floor with a handrail on one side.

## Lounge

There is a guest lounge on the ground floor which seats 20 people.

The room has a mixture of seating with sofas, chairs and benches.

Access is level.

Flooring is lino.

## Catering/self-catering

The dining area and self-catering kitchen is on the ground floor.

- There are no steps to the dining area and there is no fixed seating.
- The tables are 75cm high.
- The dining room has a lino floor.



We are able to cater for varying dietary requirements. Please advise us when making a booking.

- Continental breakfast is available – please pre-book.
- Heat it and eat it meals are available from reception.

### Laundry

The laundry is located in the outbuildings and access from the entrance is 1 step.

- There is a sink with a single cold tap.
- Facilities include 1 token-operated washing/drying machine tokens available at reception.
- Flooring is concrete.

### Other useful information

- We have a set of evacuation procedures – if required, someone will come to your room and assist you.
- We welcome trained assistance dogs. A water bowl would be available just outside the front door for assistance dogs and can be supplied for bedrooms where necessary.
- There is no WiFi or mobile reception available in the glen.

- The nearest hospital with an A&E unit is 21 miles away and the nearest doctor's surgery is 21 miles away. Please let us know if you require further information about these.
- We can offer a list of attractions and suggested places to eat.
- Our staff receive accessibility training.



# GLENCOE YOUTH HOSTEL

## Address

Glencoe, Ballachulish  
Argyll PH49 4HX

## Telephone

01855 811 219

## Open

07.30-10.00 & 16.00-21.00  
Check-in from 16.00  
Checkout by 10.00

## Parking

There are 12 car parking spaces at the hostel approx. 5m from the entrance.  
The car park surface is gravel.

On-street parking is not available near the youth hostel.

Please call youth hostel Reception on 01855 811219 if you need assistance with luggage.

## Public transport

Glencoe village is served by buses from Glasgow and Fort William, however the youth hostel is approx. 3km out of the village along a single track road.

## Dogs

Dogs are welcome, for a small fee, when you book a private room. Please advise us in advance.

## Main entrance / reception

There are 2 steps to the entrance, but no ramp or handrail.

The main door is 80cm wide and is firm to open with a pull from the outside.

Reception is on your right. The floor is carpeted.

Access is not all on a level. Lift access to the upper floor is not available.

A publicly-accessible toilet is available on the ground floor. This does not have handrails.

At check-in, reception staff will explain where the various facilities are located. They will also explain the door key and fire procedures and offer luggage assistance.

## Bedrooms

The hostel has 11 bedrooms none of which are accessible, though we do have 2 bedrooms on the ground floor with single beds and washbasins. These rooms have level access from the front door.

On the first floor there are 5 rooms with double/single beds and bunks. These rooms are reached by stairs only.

All bedroom corridors are carpeted and are a minimum of 110 cm wide.

Doors are a minimum of 80 cm wide.

Our POD accommodation is not suitable for guests with impaired mobility.

All rooms have chairs, with 'comfy' chairs in the private rooms. If you need more space, we can remove these items. Please contact reception when you arrive at the youth hostel, to arrange for furniture to be moved.

A Deafguard vibrating pillow alarm is available for guest use free of charge. Please contact the youth hostel to reserve this in advance of your stay.

## Bathrooms

All our bathrooms are shared bathrooms and offer the following:

- Step-in shower with a step threshold height of 16-20cm.
- Toilet height is 42cm.
- Washbasin height is between 84cm and 90cm depending on the washroom.
- Doors to the shower cubicles are 66cm wide.
- Non-slip flooring.
- Toilet / shower room lights are movement activated

## Hall, stairs, landings, corridors

All public areas, halls, stairs and landings are well lit with ceiling lights and short pile carpet.

There is a continuous flight of 17 steps to the first floor with a handrail on both sides.



### Lounge

There is a guest lounge on the ground floor which seats 8 people.

The room has a mixture of seating, with sofas and soft chairs

Access is level with 1 step.

Flooring is carpet.

### Catering/self-catering

Our self-catering kitchen and dining room is open plan, which makes it easier to cater.

- The sink units, worktops and cooking hobs in the self-catering kitchen are 90cm high.
- Crockery and utensil storage is located in floor units with shelves from 25cm to 90cm high.
- There are no steps to the dining area and no fixed seating.
- The dining tables are 72cm high.
- The dining room and self-catering kitchen has a linoleum floor

We are able to cater for varying dietary requirements. Please advise us when making a booking.

- Breakfast is available – please pre-book.
- Packed lunches are available – please pre-book.

### Laundry

The guest laundry is located on the ground floor and access is level.

- Facilities include 2 coin-operated washing/drying machines.
- Flooring is concrete.

### Shop

The shop is located at reception and offers a small range of toiletries and outdoor gear. We also sell confectionery and soft drinks as well as beer, wine and cider.

### Other useful information

- We have a set of evacuation procedures – if required, someone will come to your room and assist you.
- We welcome trained assistance dogs. A water bowl is available just outside the front door for assistance dogs and can be supplied for bedrooms where necessary.
- The nearest hospital with an A&E unit is 20 miles away and the nearest doctor's surgery is 4 miles away. Please let us know if you require further information about these.
- WiFi access is free
- We can offer a list of nearby attractions and suggested places to eat.
- Our staff receive accessibility training.



# GLEN NEVIS YOUTH HOSTEL

## Address

Glen Nevis  
Fort William PH33 6SY

## Telephone

01397 702336

## Open

07.00-23.00  
Check-in from 15.30  
Checkout by 10.00

## Parking

There are 14 car parking spaces at the hostel, 1 of which is a specified disability parking bay. All parking spaces are close to the rear entrance and the car park surface is level.

On-street parking is available nearby. Laybys on public road.

Please call reception on 01397 702336 if you need assistance with luggage.

## Local accessible taxi

01397 701234

## Public transport

Limited bus service from Fort William. Please contact reception for further information.

## Dogs

Dogs are welcome, for a small fee, when you book a private room. Please advise us in advance.

## Main entrance / reception

There are 8 steps to the entrance, plus a ramp, with a handrail on both sides of the steps. The main door is 104cm wide and is firm to open with a pull from the outside. Reception is straight ahead. The floor is wood.

Lift access to upper floor is not available. A publicly-accessible toilet, with handrails, is available on the ground floor.

At check-in, staff will explain where the various facilities are located. They will also explain the door key system and offer luggage assistance if required.

## Bedrooms

The hostel has 18 bedrooms, **2 of which are accessible**. There are 5 bedrooms on the ground floor, with level access from the front door.

There are 13 rooms on the first floor, only accessible by stair. All rooms have single or bunk beds and are a mix of shared and private en-suite. **Unfortunately none of the dorm accommodation is accessible.**

All bedroom corridors are vinyl and are 112cm wide. Doors are 92cm wide.

Rooms have a wooden chair. If you need more space, we can remove this item. Please contact reception once you have arrived at the hostel, to arrange for furniture to be moved.

## Bathrooms

Our accessible rooms are ensuite and offer the following:

- Bathroom door opening is 92cm.
- Level entry, step free shower with grab rails.
- Toilet, with grab rails, is 46cm high.
- Washbasin, with lever taps, is 73cm high.
- Non-slip flooring.

## Hall, stairs, landings, corridors

All public areas, halls, stairs and landings are well lit with ceiling and wall lights.

There is wooden and vinyl flooring on the stairs, hall and landing.

There is a continuous flight of 15 steps to the first floor with a handrail on both sides.

## Lounge

There are public areas for guests on the ground floor which seat 72 people. The room has a mixture of seating with sofas/soft chairs/high chairs.

Tables are 72 cm high in the dining area. Access is level and flooring is wood.

## Catering/self-catering

The restaurant/dining area/self-catering kitchen is on the ground floor.

- There are no steps to the restaurant/dining area and no fixed seating.



- The restaurant/dining room has a wood floor.
- The work surfaces in the self-catering kitchen are 92cm high.

We are able to cater for varying dietary requirements. Please advise us when making a booking.

- Breakfast is available – please pre-book before 10pm the night before.
- Packed lunches are available – please pre-book before 10pm the night before.
- Dinner may be available for group bookings of parties of 20 people or over with at least 2 weeks' advance notice.

### Laundry

- The laundry is on the ground floor and access is level.
- Facilities include token-operated washing/drying machines.
- Flooring is non-slip.

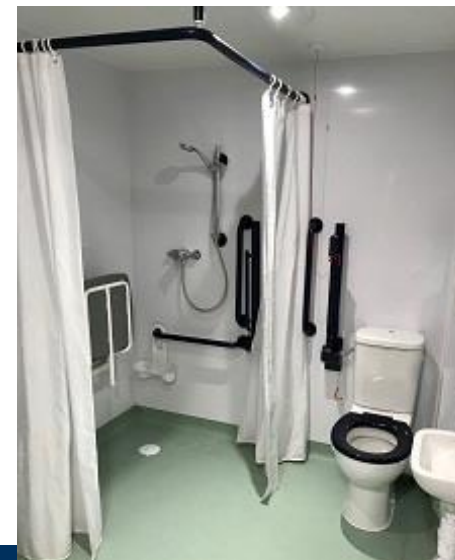
### Shop

There is a small on-site shop which sells a good selection of soft and alcoholic drinks and confectionery.

### Other useful information

- We have a set of evacuation procedures – if required, someone will come to your room and assist you.

- We welcome trained assistance dogs. A water bowl is available just outside the front door for assistance dogs and can be supplied for bedrooms where necessary.
- The nearest hospital with an A&E unit is Belford Hospital, 4 miles away and the nearest doctor's surgery is Fort William Medical Centre, 5 miles away. Please let us know if you require further information about these.
- WiFi access is free.
- We can offer a list of nearby attractions and suggested places to eat.
- Our staff receive accessibility training.



# INVERNESS YOUTH HOSTEL

## Address

15 Victoria Drive  
Inverness IV2 3QB

## Telephone

01463 231 771

## Open

07.30-22.00  
Check-in from 16.00  
Checkout by 10.00

## Parking

Car parking is available at the hostel for 3 coaches + 15 cars + 2 accessible, or no coaches + 24 cars + 1 accessible

The spaces are 50-100m from the entrance and the car park surface is tarmac.

Please call reception on 01463 231 771 if you need assistance with luggage.

## Local accessible taxi

To come.

## Public transport

The hostel is uphill from Inverness train and bus stations – a 10 minute walk.

## Main entrance / reception

There is a ramp (no handrail) up to the entrance. The main door is 160cm wide and is firm to open.

Reception is straight ahead and has an induction loop. The floor is vinyl.

Access is all on a level. There is no lift access to upper floors.

A publicly accessible toilet is available on the ground floor. This has handrails.

At check-in, staff will explain where various facilities are located. They will also explain the door key and fire procedures and offer luggage assistance.

## Bedrooms

The youth hostel has 42 bedrooms, 1 of which is accessible.

There are 2 bedrooms on the ground floor, with level access from the front door. On the first floor there are 6 rooms with single beds that are reached by stairs only.

All bedroom corridors are carpeted and are 1.05cm wide. Doors are 77cm wide.

Rooms have 1 or 2 stools and most have a table. If you need more space, we can remove these items. Please contact reception once you have arrived, to arrange for furniture to be moved.

## Bathrooms

Our accessible room is ensuite and offers the following:

- Bathroom door opening is 92cm.
- Level entry, step free shower with grab rails.
- Toilet (with grab rails) is 40 cm high.
- Washbasin (with lever taps) is 70cm high.
- Bath has grab rails and lever taps.
- Flooring is non-slip.

## Hall, stairs, landings, corridors

All public areas, halls, stairs and landings are well lit with ceiling lights.

There is short pile carpet on the stairs, hall and landing. There is a continuous flight of 15 steps to the first floor with a handrail on both sides.

## Lounges

Guest lounges on the ground floor seat up to 25 people (Reception Lounge) and up to 10 people (Quiet Lounge).

The room has a mixture of seating with sofas, soft chairs and high chairs.

Access is level.

Flooring is vinyl (Reception Lounge) and carpeted (Quiet room).

There is a widescreen television with remote control and subtitle facility.



## Catering/self-catering

The dining area and self-catering kitchen are on the ground floor.

- There are no steps to the dining area and there is no fixed seating.
- The tables are 0.76 cm high.
- The dining room has a vinyl floor.

We are able to cater for varying dietary requirements. Please advise us when making a booking.

- Breakfast is available – please pre-book.
- Packed lunches are available – please pre-book.
- Dinner may be available – please enquire at the time of booking.

## Laundry

The laundry is located on the ground floor and access is level.

- Facilities include 2 coin-operated washing/drying machines.
- Flooring is vinyl.

## Shop

There is a small shop on-site selling soft drinks, alcohol, toiletries, coffee, etc.

## Other useful information

- We have a set of evacuation procedures – if required someone will come to your room and assist you.
- We do not allow dogs at Inverness hostel, however we allow trained assistance dogs if required.
- The nearest hospital with an A&E unit is 1.4 miles away and the nearest doctor's surgery is 0.3 miles away. Please let us know if you require further information about these.
- WiFi access is free.
- We can offer a list of nearby attractions and suggested places to eat.
- Our staff receive accessibility training.





# KIRKWALL YOUTH HOSTEL

## Address

Old Scapa Road, Kirkwall,  
Orkney KW15 1BB

## Telephone

01856 872243

## Open

08.00-10.00 and 17.00-22.00

(later access can be arranged by prior agreement to accommodate the late ferry from Shetland or Aberdeen)

Check-in from 17.00

Checkout by 10.00

## Parking

There are approx. 15 car parking spaces at the hostel, 40m from the entrance. The car park entrance is an uneven gravel surface. The car park surface is level gravel.

On-street parking is available near the youth hostel.

Please call reception on 01856 872243 if you need assistance with luggage.

## Accessible taxi

01856 878787

## Public transport

Please contact reception for further information.

## Dogs

Dogs are welcome, for a small fee, when you book a private room. Please advise us in advance.

## Main entrance / reception

The entrance is level. The main door is 80cm wide and is firm to open with a pull from the outside.

Reception is on your left. The floor in reception is carpeted.

Access is all on a level with one step along the centre corridor. A carpeted ramp is available and can be placed here if required.

A publicly-accessible toilet is available on the ground floor. This has two handrails.

At check-in, reception staff will explain where the various facilities are located. They will also explain the door key and fire procedures and offer luggage assistance.

## Bedrooms

The youth hostel has 27 bedrooms on the ground floor, all with level access from the front door.

There is a single step on the ground floor corridor for which a ramp is available.

All bedroom corridors are carpeted and are 1m wide.

Doors are a minimum of 72cm wide.

Rooms have a chair and bedside cabinets. If you need more space we can remove these items. Please contact reception when you arrive to arrange for furniture to be moved.

A Deafguard vibrating pillow alarm is available for guest use free of charge. Please contact the hostel to reserve this in advance of your stay.

## Bathrooms

Our accessible rooms offer the following:

- Door opening to the bathroom is 74cm.
- There is level entry with a maximum 27cm step into the shower.
- One vertical grab rail around the shower.
- Toilet height is 40cm.
- Horizontal grab rails either side of the toilet.
- Washbasin height is 77cm.
- Flooring is linoleum.

## Hall, stairs, landings, corridors

All public areas and halls are well lit with ceiling and wall lights.

There is short pile carpet in the hall, corridors, lounge and a short pile carpeted path section through the dining room.



### Lounge

There is a guest lounge on the ground floor which seats approximately 20 people.

The room has a mixture of seating with two and three seater sofas

Access is level and flooring is carpet.

There is a widescreen television with remote control and subtitle facility.

### Catering/self-catering

The dining area and self-catering kitchen is on the ground floor.

- There are no steps to the dining area and there is no fixed seating.
- The tables are 75cm high.
- The dining room has a linoleum floor.

We are able to cater for varying dietary requirements. Please advise us when making a booking.

- Breakfast is available – please pre-book.

### Laundry

The laundry is located on the ground floor corridor and access is via one step.

Facilities include two coin-operated washing machines and two coin-operated drying machines.

Flooring is concrete.

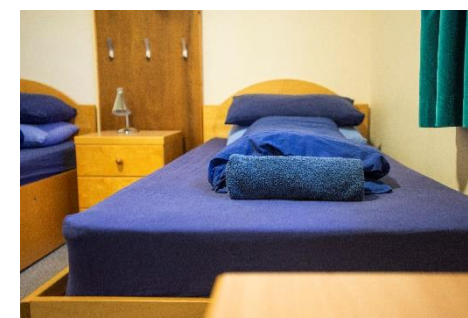
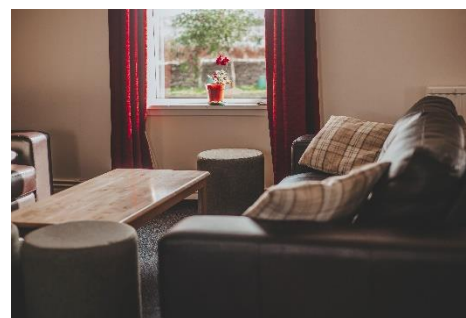
### Shop

There is a small shop on-site at reception selling a range of confectionary, drinks and toiletries.

### Other useful information

- We have a set of evacuation procedures – if required, someone will come to your room and assist you.
- We welcome trained assistance dogs. A water bowl is available just outside the front door for assistance dogs and can be supplied for bedrooms where necessary.
- The nearest hospital with an A&E unit is 0.4 miles away and the nearest doctor's surgery is 0.4 miles away. Please let us know if you require further information about these.

- WiFi access is free.
- We can offer a list of nearby attractions and suggested places to eat.
- Our staff receive accessibility training.



# LOCH OSSIAN YOUTH HOSTEL

## Address

Corrou, Fort William PH30 4AA

## Telephone

01397 732207

## Open

09.00-10.30 and 17.00-22.00

Check-in from 16.00

Checkout by 10.00

*Open all year apart from Mondays and*

*Tuesdays from late October to March.*

## Parking

There is no vehicle access to the hostel. You can leave your car at Rannoch or Tulloch, and take the train one stop to Corrou.

Access from Corrou station is only on foot or by bicycle.

## Local accessible taxi

None available.

## Public transport

The hostel is about 1km east of Corrou station, which is on the Glasgow to Fort William line.

For timetables check the ScotRail website [www.firstscotrail.co.uk](http://www.firstscotrail.co.uk)

## Hostel entrance/porch

The main entrance leads into a small porch with some coat hooks and a boot rack. This then leads into the kitchen on the left and the ladies' dorm to the right.

Reception is in a nearby building, which also houses the toilets.

There is one small 8cm step to the entrance and 39cm steps to reception.

There are no handrails at either the entrance or reception.

The main door is 120cm wide and is easy to open with a push from the outside. In order to fully open both doors, a bolt needs releasing from the inside.

The floor in reception is tiled. Access is not all on a level.

At check-in, reception staff will explain where the various facilities are located. They will also explain fire procedures and offer luggage assistance.

## Bedrooms

The youth hostel has 2 multi-bedded, same gender rooms. There is a 10cm step between the kitchen and the men's dorm and between both dorms and the washrooms. Lower bunks can be pre-booked – please contact the hostel.

Doors are a minimum of 81cm wide

## Washrooms

An outside toilet is available. This has two 15cm steps (no handrails).

- Our toilets are dry compost toilets in the building next to the hostel. There are two 13cm steps to the toilets and at night a torch is necessary. The wooden decking can also get slippery when wet.
- Toilet height is 42cm.
- Toilet lights are movement activated.
- Toilets have non-slip flooring.

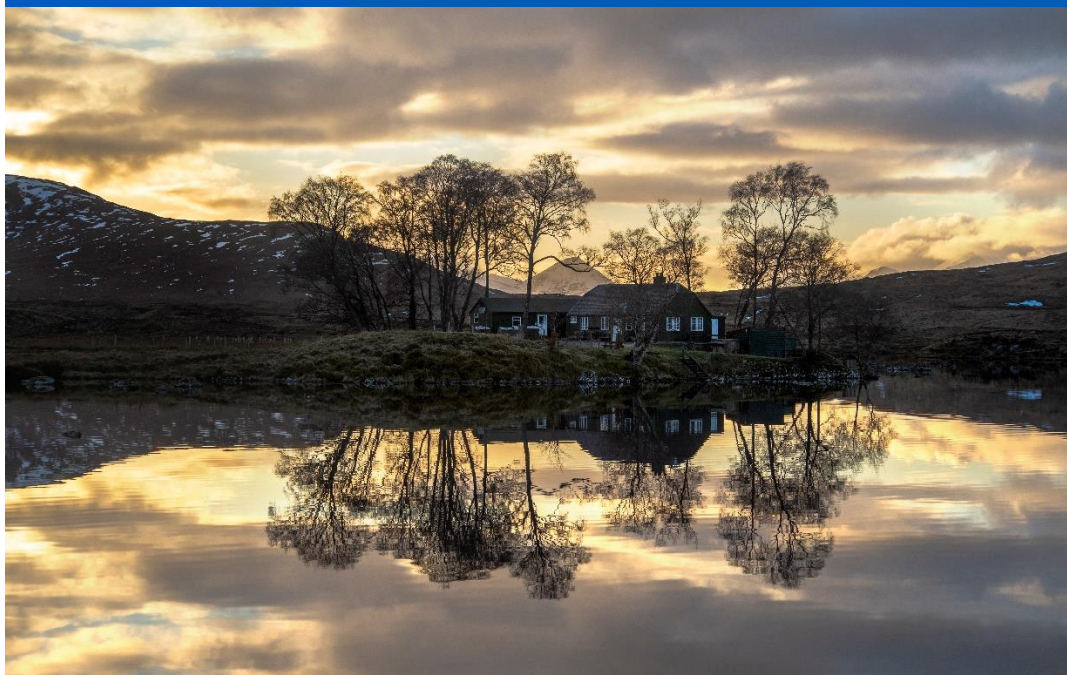
## Public areas

All public areas are well lit with ceiling lights. There is wooden flooring throughout.

## Self-catering

The self-catering kitchen is on the ground floor.

- Sink units, worktops and hobs in the self-catering kitchen are 90cm high.
- There is a sink with lever taps.
- Crockery and utensil storage is in wall units at a height of 66cm and floor units at a height of 140cm.
- There are no steps to the dining area and there is some fixed seating.
- The dining tables are 76cm high.
- The self-catering kitchen has a wooden floor.
- A cord operated drying pulley is available for guest use.



**Other useful information**

- We have a set of evacuation procedures – if required, someone will come to your room and assist you.
- We welcome trained assistance dogs. A water bowl is available just outside the front door for assistance dogs and can be supplied for bedrooms where necessary.

- The nearest hospital with an A&E unit is the Belford Hospital in Fort William 40 miles away and the nearest doctor's surgery is 40 miles away. Please let us know if you require further information about these.
- Our staff receive accessibility training.



# LOCHRANZA YOUTH HOSTEL

## Address

Lochranza  
Isle of Arran KA27 8HL

## Telephone

01770 830 631

## Open

07.00-10.00 and 17.00-21.30  
Check-in from 17.00  
Checkout by 10.00

## Parking

10 car parking spaces are available beside the hostel. The surface is uneven tarmac/gravel. There is no on-street parking.

## Local accessible taxi

From Brodick – please contact reception.

## Public transport

Please contact reception for further information.

## Dogs

Dogs are welcome, for a small fee, when you book a private room. Please let us know in advance.

## Main entrance / reception

There are 3 steps to the entrance with a handrail on the right. We can provide a ramp on request.

The main door is 90cm wide and is easy to open with a pull from the outside.

Reception is straight ahead. The floor is carpet and laminate. Access is all on a level but there is no lift access to the upper floors.

A publicly-accessible toilet is available on the ground floor. This has handrails.

At check-in, reception staff will explain where various facilities are located. They will also explain the door key and fire procedures and offer luggage assistance.

## Bedrooms

The youth hostel has 13 bedroom none of which are accessible.

All bedroom corridors are carpeted and are a minimum of 110cm wide. Doors are a minimum of 80cm wide.

Some rooms have a chair, desk and 'comfy' chair. If you need more space, we can remove these items. Please contact reception when you arrive, to arrange for furniture to be moved.

A Deafguard vibrating pillow alarm is available for guest use free of charge.

Please contact the youth hostel to reserve this in advance of your stay.

## Bathrooms

Our accessible room is en-suite and offers the following:

- Door opening to the bathroom is a minimum of 90cm wide.
- Level entry, step free shower.
- Toilet height is 50cm.
- Washbasin height is 68cm, with lever taps.
- Non-slip flooring.

## Hall, stairs, landings, corridors

All public areas, halls, stairs and landings are well lit with ceiling and wall lights.

There is short pile carpet on the stairs, hall and landing.

There is a continuous flight of 19 steps to the first floor with a handrail on one side.

## Lounge 1

There is a guest lounge on the ground floor which seats 11 people.

The room has a mixture of seating with sofas and soft chairs.

Access is level. Flooring is carpet.

There is a widescreen television with remote control and subtitle facility



### Lounge 2 (Quiet Room)

There is a guest quiet room on the ground floor which seats 9 people.

The rooms have a mixture of seating with sofas and soft chairs

Access is level. Flooring is carpet.

### Catering/self-catering

The self-catering kitchen is on the ground floor.

- The sink units, worktops and cooking hobs in the self-catering kitchen are 91cm high.
- There are sinks with lever taps.
- Crockery and utensil storage is located in floor units at a height of 91cm.
- There are no steps to the dining area and there is no fixed seating.
- The dining tables are 75cm high.
- The dining room has tiled floor.
- Breakfast is available – please pre-book.
- Packed lunches are available – please pre-book.

### Laundry

The guest laundry is located at the back of the hostel and access is level.

- Facilities include 2 coin-operated washing/drying machines.
- Flooring is concrete.

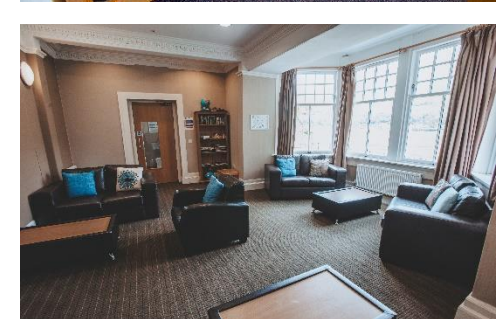
### Shop

There is a small shop on-site.

Reception sells basic products such as soft drinks, confectionery, canned food and toiletries.

### Other useful information

- We have a set of evacuation procedures – if required, someone will come to your room and assist you.
- The nearest hospital with an A&E unit is 17 miles away and the nearest doctor's surgery is 14 miles away. Please let us know if you require further information about these.
- WiFi access is free.
- We can offer a list of nearby attractions and suggested places to eat.



# OBAN YOUTH HOSTEL

## Address

Corran Esplanade,  
Oban PA34 5AF

## Telephone

0141 332 3004

## Open

07.00-22.00 and 16.00-22.00

Check-in from 16.30

Checkout by 10.00

(please advise if late arrival required)

## Local accessible taxis

Argyll Taxis 01631 565 293

Lorne Taxis 01631 564 744

## Car parking

Car parking is limited but if you require accessibility it can usually be arranged by prior agreement. Please contact reception as early as possible to discuss

The nearest public car park is at the Corran Halls, about ¼ mile away

## Public transport

Please contact reception for further information

## Dogs

Dogs are welcome, for a small fee, when you book a private room. Please advise us in advance.

## Main entrance / reception

The front reception is warm and welcoming with a lounge seating area for guests.

The main door is approximately 125cm wide and opens inwards. The inner main door opens outwards and is approximately 90cm wide. There is no dedicated wheelchair access door.

Reception is straight ahead then to the right. The floor in reception is tiled and carpeted.

A publicly-accessible toilet is available on the ground floor. There is one designated disabled toilet which is fitted with handrails and an emergency alarm system audible at reception.

At check-in, reception staff will explain where the various facilities are located. They will also explain the door key and fire procedures and offer luggage assistance.

Access to the adjacent lodge is via a ramped access which has handrails fitted on both sides. The lodge door is approximately 85cm wide and opens inward. Access to the disabled room is along a short piled carpeted corridor, which has no handrail. There are 2 outward opening fire doors which measure approximately 85cm.

## Bedrooms

Accommodation is in various configurations, sleeping 1-6 people.

The main building has 10 bedrooms, all on the first floor. Access is by stair.

In the lodge there are 4 bedrooms on the ground floor, including an accessible twin/double. All other bedrooms are on the upper floor.

All bedroom corridors are carpeted and are a minimum of 148cm wide. Doors are a minimum of 82cm wide.

## Bathrooms

Our accessible room is en-suite and offers the following:

- The bathroom is fitted out as a wetroom.
- A movable shower seat is supplied and is height adjustable.
- Toilet height is 40cm approx.
- Wash basin height is 90cm approx.
- Lever taps are fitted on the washbasin.
- A variety of handrails are fitted within this room.

## Hall, stairs, landings, corridors

All public areas, halls, stairs and landings are well lit with ceiling and wall lights. There is short pile carpet in all corridors, stairwells and bedrooms.



There is a split flight of steps to the upper floors of the main building, which is fitted with a handrail on one side. The lodge has a continuous flight to the upper level with a handrail on one side.

### Lounge areas

On the ground floor at reception there is a seated area with a selection of modern sofas and lounge chairs that can accommodate up to 25 people. Flooring is short pile carpet. There is a widescreen television with remote control and subtitle facility.

The lodge has a small lounge/self-catering kitchen seating approx. 16. There are 2 sofas and a television with remote control and subtitles. Flooring is laminate.

### Catering/self-catering

Our self-catering kitchen is located on the ground floor. It has laminate flooring.

The sink units, worktops and cooking hobs in the self-catering kitchen are 90cm high. Crockery and utensil storage is located on a 90cm high freestanding unit. For safety reasons, knives are placed higher, to be out of the reach of children.

The restaurant (seasonal) is on the ground floor of the main building.

There are no steps to the restaurant/dining area, which has a variety of movable and fixed seating. Dining tables are approx. 65cm high.

The self-catering dining room has wood laminate non-slip flooring.

We are able to cater for varying dietary requirements. Please advise us when making a booking. (Groups of 10 or more should book at least 3 days in advance.)

- Breakfast and packed lunches are available – please pre-book.
- Dinners are available for groups of 10 or more – bookable by prior arrangement with the hostel.

### Laundry

The guest laundry is located at the rear of the building. There is a 10cm step up to the laundry and drying room. The worktops are 90cm high approx. Flooring is non-slip laminate.

The laundry facility has one token washing/drying machine. You can purchase tokens from reception. An ironing board is available.

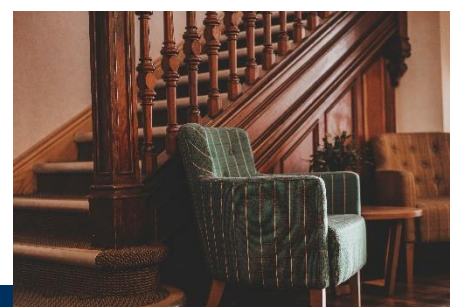
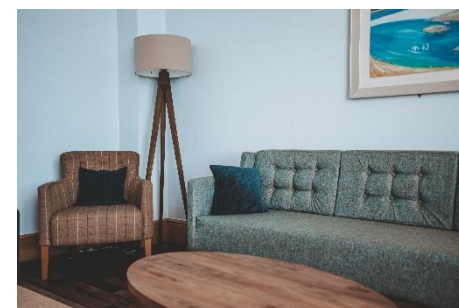
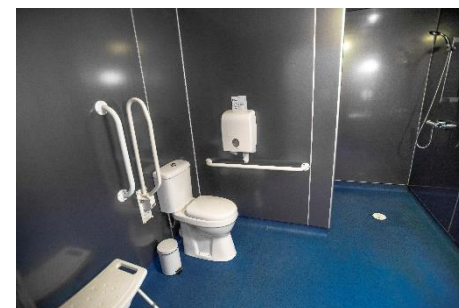
### Reception retail

Reception sells basic products such as toiletries and padlocks.

Hairdryers, irons and board games are available (a deposit may be required).

### Other useful information

- We have a set of evacuation procedures – if required, someone will come to your room to assist you.
- The nearest hospital with an A&E unit is Lorne Hospital, about 2 miles away (01631 567500). The nearest doctor's surgery is in Soroba Rd, Oban PA34 4HE, about 1.5 miles away (01631 563175). Several NHS dentists practice in Oban. Please let us know if you require further information about these.
- WiFi access is free
- We can offer a list of nearby attractions and suggested places to eat.
- Discounted membership is available for families.





# PERTH YOUTH HOSTEL

## Address

Perth College UHI, Crieff Road  
Perth PH1 2GA

## Telephone

01738 877800

## Open

24 hours  
Check-in from 16.00  
Checkout by 10.00

## Parking

Car parking at the hostel is free. There is a small ramp onto mono block paved walkways in front of the reception main door to the left. This continues right up to the main entrance and is well lit at night.

## Local accessible taxi

Ace Taxis Perth, 01738 444000

## Public transport

Buses run past the hostel to Perth City Centre. Bus No15 alights at the Perth College stop just outside the hostel. Full timetables are available at [pkc.gov.uk/bustimetables](http://pkc.gov.uk/bustimetables)

## Main entrance / reception

Reception is separate from the main accommodation buildings. Entrance door is 80cm wide with a small ramp 6cm in height.

The main door of the accommodation building is 96cm wide. This door and apartment doors open with a key fob.

All entrances are carpeted and are covered in carpet tiles. Access is all on one level.

There is an induction loop available at reception, please contact the hostel to reserve in advance of your stay. Our 3 accessible rooms are fitted with automatic loop devices.

At check-in, staff will explain where the various facilities are located. They will also explain the door key and fire procedures and offer luggage assistance.

## Bedrooms

The youth hostel has 47 bedrooms all of which are accessible on ground floor and stairwell.

All bedroom corridors are covered in lino and are a minimum of 95cm wide.

Doors are a minimum of 80cm wide.

## Bathrooms

All our accessible rooms are en-suite and offer the following:

- Door opening to the shower pod is 56cm wide.
- Step-in shower with a step threshold height of 16cm.
- Toilet height is 44cm.
- Wash basin height is 85cm.
- Lever taps are fitted on the washbasin.
- Toilet and shower room lights are switch operated.
- The mirror light is operated at the top of the mirror above the sink.
- The main overhead light is operated from outside the room at lower level on the wall.

## Hall, stairs, landings, corridors

All public areas, halls, stairs and landings are well lit with ceiling and wall lights.

There is a lino floor covering in the stairwells and bedrooms.

There is a continuous flight of steps to 2 floors of the hostel, with a handrail on each side.



### Self-catering

There are self-catering kitchens in each apartment.

- The sink units, worktops and cooking hobs in the self-catering kitchen are 88cm high.
- Our sink has lever taps.
- The dining tables are 75cm high.
- The self-catering dining room has wooden laminated non slip flooring

### Laundry

The guest laundry is located adjacent to the reception office.

- Laundry facilities include 2 coin-operated washing/drying machines.
- Flooring is non slip laminate.

### Reception retail

Reception sells basic products such as canned non-alcoholic drinks and chocolate.

### Other useful information

- We have a set of evacuation procedures – if required, someone will come to your room and assist you.
- The nearest hospital with an A&E unit is 1.3 miles away and the nearest doctor's surgery is 1.2 miles away. Please let us know if you require further information about these.
- Wi-Fi access is free.
- We can offer a list of nearby attractions and suggested places to eat.
- Our staff receive accessibility training.



# PITLOCHRY YOUTH HOSTEL

## Address

Knockard Road  
Pitlochry PH16 5HJ

## Telephone

01796 472308

## Open

All day. Reception open during  
check-in and checkout times.  
Check-in 16.00-21.00  
Checkout 07.00-10.00

## Parking

There are 14 car parking spaces at the  
hostel, close to the main entrance. The

car park surface is tarmac. On-street  
parking is available nearby.

## Local accessible taxi

01796 473931

## Public transport

Citylink (Edinburgh/Glasgow-Inverness  
bus service)

ScotRail (Edinburgh/Glasgow-Inverness  
train service)

Please contact reception for further  
information.

## Dogs

Dogs are welcome, for a small fee, when  
you book a private room. Please advise  
us in advance.

## Main entrance / reception

There is one entrance to the youth hostel,  
at the front of the building. There are 2  
steps and no ramp or handrail.

The main door is 105cm wide and is firm  
to open with a pull from the outside.

Reception is second on the right. The  
floor is linoleum.

Access not all on a level and there is no  
lift access to the upper floor.

A publicly-accessible toilet (no handrails)  
is available on the ground floor.

At check-in, reception staff will explain  
where various facilities are located.  
They will also explain the door key, fire  
procedures and offer luggage assistance.

## Bedrooms

All 14 bedrooms are on the first floor and  
only accessible by stair.

All bedroom corridors are carpeted and a  
minimum of 81cm wide. Doors are a  
minimum of 74cm wide.

Most rooms have a chair and desk. If you  
need more space, we can remove these.  
Please contact reception when you arrive  
to arrange for furniture to be moved.

A Deafgard vibrating pillow alarm is  
available for guest use free of charge.  
Please contact the hostel to reserve this in  
advance of your stay.

## Bathrooms

All rooms are en-suite and offer the  
following:

- Door opening to the bathroom is  
a minimum of 65cm wide.
- Level entry, step-in shower with  
a step threshold height of 16cm  
(no grab rails).
- Non-slip flooring.

## Hall, stairs, landings, corridors

All public areas, halls, stairs and  
landings are well lit with ceiling and  
wall lights.

There is short pile carpet on the  
stairs and linoleum/tiles in the hall  
and landing.

There is a continuous flight of 13  
steps to the first floor with a handrail  
on both sides.

## Lounge 1

This lounge on the ground floor seats  
12 people. The room has 3 sofas.

Flooring is carpet. Access is level once  
in the hostel.

## Lounge 2 (Quiet Room)

There is a TV lounge/quiet room on  
the ground floor which seats 8 people.

There is a television with remote  
control and subtitle facility.



The room has a mixture of seating with 2 sofas and 1 soft chair. Flooring is carpet and tiles.

Access is level once in the hostel.

### Catering/self-catering

The dining area/self-catering kitchen is on the ground floor.

- The sink units, worktops and cooking hobs in the self-catering kitchen are 94cm high. There are no sinks with lever taps.
- Crockery/utensil storage is in wall and floor units at a height of 92cm/140cm.
- There are no steps to the dining area and no fixed seating.
- The dining tables are 75cm high.
- The dining room has linoleum flooring.

We are able to cater for varying dietary requirements. Please advise us when making a booking.

- Continental breakfast is available – please pre-book.
- Cooked breakfast is available for groups of 20 or more – please enquire at the time of booking.
- Packed lunches are available – please pre-book.
- Dinner may be available for groups of 20 and more – please enquire at the time of booking.

### Laundry

The guest laundry is located outside and access is level.

- There is no sink.
- Facilities include coin-operated washing/drying machines.
- Flooring is flagstone.

### Shop

There is a small shop on-site selling a limited stock of confectionary, snacks and toiletries.

### Other useful information

- We have a set of evacuation procedures – if required, someone will come to your room and assist you.
- The hostel is not pet-friendly, however we welcome trained assistance dogs. A water bowl can be made available just outside the front door for assistance dogs and can be supplied for bedrooms where necessary.
- The nearest hospital with an A&E unit is 28 miles away and the nearest doctor's surgery is 0.2 miles away. Please let us know if you require further information about these.
- WiFi access is free.
- We can offer a list of nearby attractions and suggested places to eat.
- Our staff receive accessibility training.



# PORT CHARLOTTE YOUTH HOSTEL

## Address

Main Street, Port Charlotte  
Isle of Islay PA48 7TX

## Telephone

01496 850385

## Open

08.00-10.00 and 17.00-22.00  
(door code for late access)  
Check-in from 17.00  
Checkout by 10.00

## Parking

There are 6-8 parking spaces at the hostel, 20m from the entrance. The surface is level, grassy and stony. There is also on-street parking nearby.

The one entrance to the hostel is on Main Street.

Please call reception on 01496 850385 if you need assistance with luggage.

## Local accessible taxi

Rhinns Taxi Service 01496 850170 /  
07771 921 157

## Public transport

Please contact reception for further information.

## Main entrance / reception

The main door is 86cm wide and easy to open with a pull from the outside.

There are 2 flights of stairs from the main door to the reception area. The first has 6 stairs the second has 12 stairs and there is a handrail on the right side.

Access is all on one level, once the stairs have been climbed, but lift access is not available. The floor in reception is carpeted.

A publicly-accessible toilet is on the first floor. This does not have handrails.

At check-in, reception staff will explain where the various facilities are located. They will also explain the door key and fire procedures and offer luggage assistance.

## Bedrooms

There are no bedrooms on the ground floor, but once on the first floor all 8 rooms have level access.

All bedroom corridors are carpeted and are a minimum of 117cm wide.

Doors are a minimum of 78cm wide. All rooms have a chair. If you need more space, we can remove this. Please contact reception when you arrive at the hostel to arrange this.

A Deafguard vibrating pillow alarm is available for guest use free of charge. Please contact the youth hostel to reserve this in advance of your stay.

## Bathrooms

All the bedrooms have a washbasin at a height of 90cm, though none are en-suite.

- Door opening to the bathroom is a minimum of 80cm wide
- Step-in shower with a step threshold height of 14cm. No grab rails, horizontal or vertical, are fitted around the shower.
- Toilet height is 44cm. No horizontal or vertical grab rails are either side of the toilet.
- Washbasin height is 84cm.
- The flooring is laminate.
- Toilet / shower room lights are activated by a string pull.

## Hall, stairs, landings, corridors

All public areas, halls, stairs and landings are well lit with ceiling and wall lights.

There is laminate flooring on the stairs, bathrooms and kitchen, and short pile carpet throughout the rest of the hostel.

There are 2 flights of stairs to the hostel/reception entrance with a handrail on one side.



### Lounge

There is a guest lounge on the first floor which seats 20-25 people. Access is level once the hostel has been entered on the first floor.

The room has a mixture of seating with sofas and soft chairs. Flooring is carpet.

There is a widescreen television with remote control and subtitle facility.

### Catering/self-catering

The restaurant/dining area/self-catering kitchen is on the first floor.

- The sink units, worktops and cooking hobs in the self-catering kitchen are 90cm high.
- There are 3 sinks with faucet taps.
- Crockery and utensil storage is located in storage units at a height of 90cm.
- There are no steps to the restaurant/dining area and there is no fixed seating.
- The dining tables are 77cm high.
- The restaurant/dining room has a laminated floor.
- Breakfast is available.
- 2-course pizza and ice-cream meals are available – please enquire at the time of booking.

### Laundry

The guest laundry is located off reception and access is level.

- There is a sink with faucet taps.
- The sink unit and worktops are 90cm high.
- Facilities include 1 coin-operated washing machine and 1 drying machine.
- Flooring is laminate.
- There are rails for clothes drying at 115-200cm high.

### Shop

There is a small shop on-site selling a variety of grocery items, bottled water and snack bars.

### Other useful information

- We have a set of evacuation procedures – if required, someone will come to your room and assist you.
- We welcome trained assistance dogs. A water bowl is available outside the front door for assistance dogs and can be supplied for bedrooms where necessary.
- The nearest hospital with an A&E unit is approx. 16 miles away and the nearest doctor's surgery is 300 metres away. Please let us know if you require further information about these.

- WiFi access is free.
- We can offer a list of nearby attractions and suggested places to eat.



# PORTREE YOUTH HOSTEL

## Address

Lisigarry Court, Bayfield  
Portree IV519EW

## Telephone

01478 612231

## Open

07.30-10.00 and 15.00-22.30  
Check-in from 16.00  
Checkout by 10.00

## Parking

There are 5 car parking spaces at the hostel, directly beside reception. The car park surface is gravel. A large long-stay car park is located nearby and is free between 8pm-8am. Outside these times charges range from: £1 for 2hrs to £4.50 for 12hrs

Please call reception on 01478 612231 if you need assistance with luggage.

## Accessible taxi

Gus's Taxi 01478 613000

## Public transport

Portree can be reached by direct buses from Glasgow and Inverness. The bus stop is close to the hostel. Please contact reception for further information.

## Main entrance / reception

There is ramp up to the hostel entrance and a flight of outdoor steps to the Upper Building rooms.

There is no handrail at the entrance.

The main door is 82cm wide and is easy to open with a pull from the outside.

Reception is on your right when you come in the front door. The floor is tiled.

Access is not all on a level and there is no lift access to the upper floor.

A publicly-accessible toilet is available on the ground floor. Our wheelchair accessible toilet, fitted with an emergency cord system, is within a private room on the ground floor, so access at all times cannot be guaranteed. This does not have handrails.

At check-in, staff will explain where the various facilities are located. They will also explain the door key and fire procedures and offer luggage assistance.

## Bedrooms

The youth hostel has 13 bedrooms of which 4 are accessible by ground floor entry and the remaining 9 are accessible by stairs. On the first floor of the Lower Building there is 1 room with 8 single

beds (4 sets of bunk beds) that are reached by stairs only. All other rooms are located in the Upper Building, which are accessible by stairs.

All bedroom corridors in the building are tiled/linoleum and are a minimum of 110cm wide.

Doors are a minimum of 80cm wide.

Rooms have at least a chair and desk, and some rooms have a 'comfy' chair. If you need more space, we can remove these items. Please contact reception when you arrive to arrange for furniture to be moved.

A Deafguard vibrating pillow alarm is available for guest use free of charge. Please contact the hostel to reserve this in advance of your stay.

## Bathrooms

Our accessible room is ensuite and offers the following:

- Door opening to the bathroom is a minimum of 80cm wide.
- The shower does have a lip but has enough space to accommodate a wheelchair.
- Toilet height is 41cm.
- Wash basin height is 80cm.
- Non-slip flooring.



### Hall, stairs, landings, corridors

All public areas, halls, stairs and landings are well lit with ceiling and wall lights.

There is short pile carpet on the stairs of the Upper Building, and hard linoleum flooring on the Lower Building areas, including stairs and landing.

There is a continuous flight of 20 steps to the first floor with a handrail on both sides.

### Lounge

There is a guest lounge on the ground floor which seats 26 people.

The room has a mixture of seating with sofas/soft chairs/dining chairs.

Access is level and flooring is linoleum.

There is no television.

### Catering/self-catering

The dining area/self-catering kitchen is on the ground floor.

- The sink units, worktops and cooking hobs in the self-catering kitchen are 92cm high
- Crockery and utensil storage is in wall units at a height of 150cm
- There are no steps to the dining area and there is no fixed seating.
- The dining tables are 75cm high.
- The dining room has a linoleum floor.

### Laundry

The guest laundry is located behind the Lower Building and access is via 1 step.

- The sink and worktops are 92cm high
- Facilities include 2 coin-operated washing, and 2 coin-operated drying machines.
- Flooring is hard linoleum.

### Shop

There is no on-site shop.

### Other useful information

- We have a set of evacuation procedures – if required, someone will come to your room and assist you.
- We welcome trained assistance dogs. A water bowl can be made available just outside the front door for assistance dogs and can be supplied for bedrooms where necessary.
- The nearest hospital with an A&E unit is 500m away (only open until 6pm, closest after this time is Broadford, 20 miles away) and the nearest doctor's surgery is 500m away. Please let us know if you require further information about these.
- WiFi access is free.
- We can offer a list of attractions and suggested places to eat.
- Our staff receive accessibility training.





# RATAGAN YOUTH HOSTEL

## Address

Ratagan, Glen Shiel, Kyle  
Ross-shire IV40 8HP

## Telephone

01599 511 243

## Open

08.00-10.00 and 17.00-22.00  
Check-in from 17.00-22.00  
Checkout by 10.00

## Parking

There are 15 parking spaces at the hostel, 15-30m from the entrance. Surfaces are level gravel. There is no on-street parking nearby.

If you need easier access, please ask to use one of our fire doors. Call reception on 01599 511243 if you need help with luggage.

## Local accessible taxi

D&H Coach & Taxi, tel 01599 511 450  
or 07771 968617.

## Public transport

Rail service to Kyle, then bus to Shiel Bridge, then a walk of 2 miles.

Contact reception for further information.

## Dogs

Dogs are welcome, for a small fee, when you book a private room. Please advise us in advance.

## Main entrance / reception

There is no ramp or steps at the entrance and no handrail.

The main door is 80cm wide and is easy to open with a pull from the outside.

Reception is on your left and the floor is carpeted.

Access to reception is not on a level and there is no lift access to the upper floor.

A publicly-accessible toilet is available on the ground floor. We have one designated disabled bathroom with toilet which is fitted with handrails.

At check-in, staff will explain where the various facilities are located. They will also explain the door key and fire procedures and offer luggage assistance.

## Bedrooms

The youth hostel has 6 bedrooms, one of which is accessible.

There is one 3-bedded room on the ground floor, with level access from the front door or through the fire doors (on request) 4m from the front car park.

On the first floor there are 5 rooms with various configurations - from 2 four-bedded family rooms to 2 eight and 1 ten-bedded shared room (reached by stairs only).

All bedroom corridors are carpeted and are a minimum of 80cm wide. Doors are a minimum of 80cm wide.

All rooms have a chair. If you need more space, we can remove this. Please contact reception when you arrive to arrange for furniture to be moved.

A Deafguard vibrating pillow alarm is available for guest use free of charge. Please contact the hostel to reserve this in advance of your stay.

Bedrooms do not have lockers, but there are some lockers available in the public area.

## Bathrooms

Our accessible room does not have a private bathroom, but there is a common bathroom next door that has a toilet with grab rails and easy access shower.

- Door opening to the bathroom is a minimum of 80cm wide.
- Level entry, step free shower.
- Toilet height is 44cm.
- Washbasin height is 78cm.
- Grab rails, horizontal and vertical, are fitted around the shower and either side of the toilet.
- Non-slip vinyl flooring.



### Hall, stairs, landings, corridors

All public areas, halls, stairs and landings are well lit with ceiling and wall lights.

There is short-pile carpet on the stairs, hall and landing.

There is a continuous flight of 17 steps to the first floor with a handrail on one side in the private rooms' side of the hostel.

There is a continuous flight of 9 steps, then a small landing, then another 9 steps to the first floor with handrail on one side in the dormitory part of the hostel.

### Lounge

There is a guest lounge on the ground floor which seats 16 people.

The room has a mixture of seating with sofas/soft chairs/high chairs. Flooring is carpet.

Access is on the same level as the main doors and reception, with no stairs.

### Catering/self-catering

The dining area and self-catering kitchen are on the ground floor. There are no steps to the dining area and there is no fixed seating.

- The sinks, worktops and hobs in the self-catering kitchen are 90cm high.

- Crockery and utensils are stored in shelved units. Plates, pans and pots are on shelves 20-90cm high. Mugs, cups and glasses are stored on a wall shelf approx 160cm high.
- The dining tables are 73cm high.
- The dining room has a partly-tiled, partly-carpeted floor.
- Breakfast is available – please pre-book.

### Laundry

The guest laundry is located on the ground floor on the same level as reception, kitchen and common room. There are no stairs.

- The sink and worktops are 92cm high.
- Facilities include coin-operated washing and drying machines.
- Flooring is non-slip vinyl.



### Shop

There is a small shop on-site selling a range of groceries and a variety of frozen self-catering meals.

### Other useful information

- The nearest hospital with an A&E unit is 27 miles away in Broadford and the nearest doctor's surgery is 18 miles away in Kyle of Lochalsh. Please let us know if you require further information about these.
- The nearest pub/restaurant is 2.5 miles away, the nearest shops are in Shiel Bridge (short opening hours) 2 miles away and in Inverinate 5.5 miles away (open 8.00-20.00).
- WiFi access is free.
- We can offer a list of attractions and suggest places to eat.



# ROWARDENNAN LODGE

## Address

By Drymen  
Glasgow G63 0AR

## Telephone

01360 870 259

## Open

07.00-10.00 and 16.30-22.00  
Check-in from 16.30  
Checkout by 10.00

## Parking

There are 20 car parking spaces at the hostel. The car park surface is a mixed gravel and tarmac area with some spaces directly beside the youth hostel and others 50m away.

Please call reception on 01360 870259 if you need assistance with luggage.

## Local accessible taxi

Co-op Taxis Alexandria 01389 753376

## Public transport

There is no coach access after Balmaha  
Please contact reception for further information.

## Dogs

Dogs are welcome, for a small fee, when you book a private room. Please advise us in advance.

## Main entrance / reception

There is no ramp at the entrance, however there is ramped access at the side of the building which will need to be opened by staff initially.

There are 5 steps to the entrance with a handrail on both sides.

The main door is 80cm wide and is firm to open with a pull from the outside.

Reception is ahead on your right. The floor is carpeted.

Access is not all on a level and there is no lift access to the upper floor.

A publicly-accessible toilet (no handrails) is available on the ground floor.

At check-in staff will explain where the various facilities are located. They will also explain the door key and fire procedures and offer luggage assistance.

## Bedrooms

There are 7 bedrooms on the ground floor, 1 of which is accessible with level access from the front door.

On the first floor, only reachable by stair, there are 2 rooms with 2 single beds.

All bedroom corridors are carpeted and a minimum of 90cm wide. Doors are a minimum of 100cm wide.

All rooms have a chair. If you need more space, we can remove these. Please contact reception when you arrive at the youth hostel, to arrange for furniture to be moved.

A Deafguard vibrating pillow alarm is available for guests to use free of charge. Please contact the hostel to reserve this in advance of your stay.

## Bathrooms

Our accessible room is ensuite with the following:

- Door opening to the bathroom is 90cm wide.
- Level entry, step free shower.
- Toilet height is 40cm.
- Washbasin, with lever taps, is 78cm high.
- Grab rails, horizontal and vertical, are fitted around the shower.
- There are horizontal and vertical grab rails either side of the toilet.
- Non-slip flooring.

## Hall, stairs, landings, corridors

All public areas, halls, stairs and landings are well lit with ceiling lights.

There is short pile carpet on the stairs, hall and landing.

There are two flights of stairs, one of 15 steps and one of 4 steps to the first floor with a handrail on one side.



### Lounge

There is a guest lounge on the ground floor which seats 40 people. The room has a mixture of seating with sofas / soft chairs / high chairs.

Access is via 2 steps. Flooring is carpet and vinyl.

There is a widescreen television with remote control and subtitle facility

### Self-catering

The self-catering kitchen is on the ground floor.

- The sink units, worktops and hobs in the self-catering kitchen are 92cm high.
- There are sinks with lever taps.
- Crockery and utensil storage is located in floor and wall units at heights of 10cm and 137cm.
- There are no steps to the dining area and there is some fixed seating.
- The dining tables are 84cm high.
- The dining room has a vinyl floor.

### Catering

- The restaurant is on the ground floor.
- There are no steps to the restaurant and there is some fixed seating.
- The dining tables are 82cm high.
- The restaurant/dining room has a vinyl floor.

We are able to cater for varying dietary requirements. Please advise us when making a booking.

- Breakfast is available – please pre-book or upon arrival.
- Packed lunches are available – please pre-book or upon arrival.
- Dinner may be available – please enquire at the time of booking although bookings may be made upon arrival.

### Laundry

The guest laundry is located in the corridor behind the reception area and access is level on the ground floor.

The sink unit is 87cm high.

Facilities include 2 coin-operated washing/drying machines.

Flooring is vinyl.

### Shop

There is a small shop on-site.

### Other useful information

- We have a set of evacuation procedures – if required, someone will come to your room and assist you.
- We welcome trained assistance dogs. A water bowl is available just outside the front door and can be supplied for bedrooms where necessary.

- The nearest hospital with an A&E unit is 20 miles away and the nearest doctor's surgery is 11 miles away. Please let us know if you require further information about these.
- WiFi access is free.
- We can offer a list of nearby attractions and places to eat.
- Our staff receive accessibility training.



# STIRLING YOUTH HOSTEL

## Address

St John Street  
Stirling FK8 1EA

## Telephone

01786 473 442

## Open

24 hours  
07.00 – 23.00  
Check-in from 16.00  
Checkout by 10.00

## Parking

There are 8 parking spaces at the hostel 10m from the entrance in the front. The car park surface is uneven/tarmac. There is on-street Pay&Display parking nearby.

Please call reception on 01786 473 442 if you need assistance with luggage.

## Local accessible taxi

01786 445544 or 511111

## Public transport

The rail and bus stations are approximately 1km downhill in the town centre.

Please contact reception for further information.

## Main entrance / reception

There is a ramp (no handrail) up to the entrance.

The main door is 154cm wide and is firm to open with a pull from the outside - staff will assist.

Reception is on your left and the floor in reception is tiled with an entrance mat. There is an induction loop.

Lift access to upper floors is not available.

A publicly-accessible toilet, with handrails, is available on the ground floor.

At check-in, reception staff will explain where various facilities are located. They will also explain the door key and fire procedures and offer luggage assistance.

## Bedrooms

The youth hostel has 29 bedrooms, of which 1 is accessible, with level access from the front door.

On the first and second floors there are 29 rooms with double/single beds that are reached by split level stairs.

All bedroom corridors are carpeted and are a minimum of 105cm wide. Doors are a minimum of 110cm wide.

Rooms have a chair, desk and 'comfy' chair. If you need more space, we can remove these items. Please contact

reception when you arrive to arrange for furniture to be moved.

A Deafguard vibrating pillow alarm is available for guest use free of charge. Please contact the hostel to reserve this in advance of your stay.

## Bathrooms

Our accessible room is ensuite and offers the following:

- Door opening to the bathroom is a minimum of 90cm wide.
- Level entry with a lip, step free shower.
- Washbasin height is 84cm.
- Lever taps are fitted on the washbasin.
- Vertical grab rails are fitted around the shower.
- Vertical grab rail to right of the toilet.
- No non-slip flooring.
- Toilet/shower room lights are not movement activated

## Hall, stairs, landings, corridors

All public areas, halls, stairs and landings are well lit with ceiling lights.

There is short pile carpet on the stairs, hall and landing.

There is a continuous flight of 20 steps to the first floor with a landing after the first 6, and a further landing after the next 7, with a handrail on one side.



### Lounge 1

There is a guest dining/lounge on the ground floor which seats 70 people.

The room has a mixture of seating with sofas / soft chairs / high chairs. Flooring is vinyl and access is level.

There is a widescreen television with remote control and subtitle facility.

### Lounge 2 on first floor

There is a guest lounge/quiet room on the first floor which seats 30.

The room has a mixture of seating with sofas / soft chairs / high chairs. Flooring is carpet and access is via 20 steps.

There is a widescreen television with remote control and subtitle facility.

### Catering/self-catering

The restaurant, dining area and self-catering kitchen are on the ground floor.

The sinks (some with lever taps), worktops and hobs in the self-catering kitchen are 90cm high. Crockery and utensil storage is in floor units at a height of 90cm.

There are no steps to the restaurant/dining area and no fixed seating. The dining tables are 75cm high.

The restaurant/dining room has a vinyl floor.

We are able to cater for varying dietary requirements. Please advise us when making a booking.

Breakfast is available – please pre-book.

Packed lunches are available – please pre-book.

Dinner may be available – please enquire at the time of booking.

### Laundry

The guest laundry is located on second floor and access is via 20 steps. (Staff are happy to assist with laundry.)  
Flooring is tile.

Facilities include 2 coin-operated washing/drying machines. A cord-operated drying pulley is also available.

### Shop

There is a small shop selling wine, local beers, confectionary and basic essentials.

### Other useful information

- We have a set of evacuation procedures – if required, someone will come to your room and assist you.
- We welcome trained assistance dogs. A water bowl is available just outside the front door and can be supplied for bedrooms where necessary.

- The nearest hospital with an A&E unit is 1½ miles away and the nearest doctor's surgery is ½ mile away. Please let us know if you require further information about these.
- WiFi access is free.
- We can offer a list of nearby attractions and suggested places to eat.
- Our staff receive accessibility training.



# TOBERMORY YOUTH HOSTEL

## Address

Main Street  
Tobermory PA75 6NU

## Telephone

01688 302 481

## Open

08.00-10.00 and 17.00-22.00  
Check-in from 17.00-21.00  
Checkout by 10.00

## Parking

There's no car park at the youth hostel but parking is available on the main street.

There's also a public car park a short walk away at the end of the main street.

## Local accessible taxi

Tobermory Taxis 01688 302635.

## Public transport

Ferry connections are operated by Caledonian MacBrayne (01475 650 100) and buses by West Coast Motors (01586 552 379).

Please contact reception for further information.



## Main entrance / reception

There is a step to the main door. The door is 1.5m wide and is split in two equal halves. It pushes inward.

There is a full width door immediately behind the main door. This door opens outward.

Reception is on the left along a short corridor. The floor in is laminate tiled.

The front reception is warm and welcoming with a lounge seating area for guests. Complimentary tea and coffee is available.

A male toilet (only) is available on the ground floor. There is no designated disabled toilet although all toilets are fitted with handrails.

At check-in, reception staff will explain where the various facilities are located. They will also explain the door key and fire procedures and offer luggage assistance.

Access to rooms is via a stairway at the rear of the hostel.

## Bedrooms

The hostel has 8 bedrooms, none of which are adapted for special access.

There are various configurations - from 3 person rooms to 6 person dormitories. All bedrooms are on the first and second floors. There are no lifts.

All bedroom corridors are carpeted and are a minimum of 140cm wide.

Doors are approximately 80cm wide.

## Bathrooms

All our washrooms are of conventional design and are not access compliant, though they all have handrails fitted.

The gents' facilities are located on the ground floor whilst the ladies' are on the upper (second) floor.

## Hall, stairs, landings, corridors

All public areas, halls, stairs and landings are well lit.

There is short pile carpet in all corridors, some stairways and all bedrooms.

All stairways have at least one handrail.

## Lounge

On the ground floor at reception there is a seated area with a selection of sofas and lounge chairs that can accommodate about 15 people.

Flooring is carpet tiles.

There is a widescreen television with remote control and subtitle facility.

### Self-catering

Our self-catering kitchen is on the ground floor and has laminate flooring.

- The sink units, worktops and cooking hobs in the self-catering kitchen are 90cm high.
- Our sinks have conventional taps.
- Crockery and utensil storage is located on a freestanding unit on the kitchen work surface.
- There are no steps to the dining area and no fixed seating.
- The dining tables are approximately 75cm high.
- Breakfast is available. This requires to be pre-booked.
- All parties of over 10 people must book minimum of three days in advance

### Laundry

The guest laundry is located on the lower ground floor and access is level via the stairwell.

- Worktops are 82cm high.
- Laundry facilities include 1 token-operated washing/drying machines (tokens available from reception).
- Flooring is concrete.

### Reception retail

Hairdryers and board games are available (a deposit may be required).

There are restaurants, cafes and shops close by in the village.

### Other useful information

- We have a set of evacuation procedures – if required, someone will come to your room and assist you.
- The nearest hospital with an A&E unit is at Craignure about 25 miles away and the nearest doctor's and dentist's surgery is at Rockfield behind the youth hostel. The doctor can be contacted on 01688 302013 and the dentist on 01688 302105. Please let us know if you require further information about these.
- We can offer a list of nearby attractions and suggested places to eat.





# TORRIDON YOUTH HOSTEL

## Address

Torridon, By Achnasheen IV22 2EZ

## Telephone

01445 791284

## Reception open

*Apr-Oct* 08.00-10.00 and 17.00-22.00

Check-in from 17.00 / Checkout by 10.00

*Nov-Mar* 08.00-10.00 and 16.00-21.00

Check-in from 16.00 / Checkout by 10.00

Closed 10.00-14.00 daily for cleaning.

## Parking

Free car parking is available at the youth hostel. Car park surface is gravel.

## Local accessible taxi

None available.

## Public transport

Public transport is limited; for full information please visit [www.travelinescotland.com](http://www.travelinescotland.com)

The nearest train station is at Achnasheen, which is 20 miles away.

Please contact reception for further information or visit our website.

## Dogs

Dogs are welcome, for a small fee, when you book a private room. Please advise us in advance.

## Main entrance / reception

There are 6 steps at the entrance.

There is no handrail.

The main door is 70cm wide and opens outwards with a handle to lever down and then pull from the outside. It can be extended a further 35cm by opening a second door.

There is a 5cm high step at the door into the porch. This leads into reception. The porch door opens outward and is a fixed pull handle. The door is 95cm wide.

There are 7 steps, approx. 15cm high, to access reception from the porch. The floor is tiled.

Reception is very spacious and has a seating area, with fixed seating, for 12 people.

Access is not all on a level. Although the built into the hillside and there are multiple sections of steps to access different levels within the building.

Lift access is not available.

A publicly-accessible toilet is available in the porch. There is no designated disabled toilet.

At check-in, reception staff will explain where the various facilities are located.

## Bedrooms

The youth hostel has 13 bedrooms with mostly bunk beds and a few single beds.

There are various configurations from 2 single beds to 4 bunk beds. There is 1 en-suite room which sleeps 6 people.

All bedrooms are on multi levels on the ground floor. The nearest bedroom is accessed by 6 steps (15 cm high) from reception. The furthest room by 15 steps (15 cm high).

Doors are at least 75cm wide. Rooms are carpeted.

All rooms have a chair and locker or cabinet. If you need more space, we can remove some of these items. Please contact reception before you arrive to arrange for furniture to be moved.

A Deafguard vibrating pillow alarm is available for guest use free of charge. Please contact the hostel to reserve this in advance of your stay.

All bedroom corridors are carpeted and are a minimum of 130cm wide. Along the corridors there are 2 additional doors 95cm wide.

There are additional steps to access the bathroom areas – between 3 and 6 steps (15cm high).



### Bathrooms

- The youth hostel has 1 en-suite six-bedded room.
- Other bathrooms are designated male or female.
- There are no disabled toilets suitable for wheelchairs.
- Door opening to the bathroom is a minimum of 75cm wide - push to enter. Each bathroom has two doors to pass through to enter.
- Step-in shower with a step threshold height of 24cm and grab rails.
- Toilet height is 43cm, toilet cubicle doors are 65cm wide.
- Washbasin height is 85cm.
- Floors are vinyl.

### Hall, stairs, landings, corridors

All public areas are well lit. There is carpet in the lounges, vinyl in the dining room and tiles in the kitchen.

There are 9 further steps to access the kitchen and dining room from the bedrooms or reception.

### Lounge

The guest lounge seats 20 and is accessed from the dining room via 5 steps. The door is 110 cm wide and has a fixed pull handle.

This room has movable sofas and chairs and a TV.

### Self-catering kitchen and dining room

The self-catering kitchen is accessed by 9 steps (15cm high) from reception and has a vinyl floor.

- The sink units and worktops are 90cm high and the hobs in the self-catering kitchen are 90cm high.
- Crockery and utensil storage is located under the worktops.
- The dining tables are 80cm high. Chairs are movable.
- The dining room has a laminate floor and is directly accessible from the kitchen.

We are able to cater for varying dietary requirements. Please advise us when making a booking.

- Breakfast is available – please pre-book.
- Packed lunches are available – please pre-book.
- Evening meals may be available – please enquire at the time of booking.

### Laundry & drying room

The guest laundry is located in the reception area through a push door which is 75cm wide.

- There is one sink at a height of 85cm.
- Facilities include 2 token-operated washing/drying machines.
- Flooring is vinyl.

- The drying room is also accessed from reception through a push door which is 75cm wide. Flooring is tile.
- Drying racks are fixed in position at a height of 160cm and hooks at 160cm.

### Shop

There is a small shop at reception available during opening hours. The hostel is licenced to sell alcohol.

### Other useful information

- We have a set of evacuation procedures. Fire exits are not accessible for wheelchairs and the ground outside is rough and uneven in some places.
- The nearest hospital with an A&E unit is in Inverness 62 miles away and the nearest doctor's surgery is located nearby in Torridon village. Please let us know if you require further information.
- WiFi access is free
- We can offer a list of nearby attractions and suggested places to eat.
- Staff have received accessibility training.



# ULLAPOOL YOUTH HOSTEL

## Address

22 Shore Street  
Ullapool IV26 2UJ

## Telephone

01854 612254

## Open

08.00-10.00 and 16.30-22.30  
Checking from 16.30  
Checkout by 10.00

## Parking:

Car parking is not available at the hostel.

Nearby on-street parking is subject to availability and may be time limited in the daytime during the summer. Mon to Sat 1000-1700, you can park for 2 hours (no return within an hour).

The village has a large free carpark near approximately 500m from the hostel.

## Local accessible taxi

07517 612619 graham@ullapool-taxis.co.uk  
07801 355510 ewensofullapool.co.uk

## Public transport

Please contact reception for further information.

The main door is 74cm wide and easy to open with a handle to lever down and then a push from the outside. There is a 15cm step at the door.

The entrance hall is 80cm wide. Reception is straight ahead down the narrow entrance hall and on the left. Flooring is carpet tiles.

Access is not all on a level and lift access to upper floor is not available.

At check-in, reception staff will explain where the various facilities are located.

## Bedrooms

The youth hostel has 10 bedrooms with mostly bunk beds and a few single beds with various configurations from 2 singles to 3 bunk beds.

All bedrooms are on the first floor up a flight of 14 stairs. The staircase is 89cm wide with handrails on both sides. The steps are 18cm high.

One of the upstairs corridors to 3 bedrooms has a step (13cm) onto the corridor and one of the bedrooms has a step up into it (20cm).

All bedroom corridors are carpeted and are a minimum of 92cm wide. Doors are a minimum of 72cm wide.

Most rooms have a chair (or seating cube) and locker or cabinet. If you need more space, we can remove some of these items. Please contact reception when you arrive to arrange for furniture to be moved.

A Deafgard vibrating pillow alarm is available for guest use free of charge. Please contact the hostel to reserve this in advance of your stay.

## Bathrooms

All bathrooms are on the first floor up one flight of 14 steps. There are handrails in the bathroom shower cubicles, but not in the en-suite room. There is no designated disabled toilet.

- We have one en-suite 4 bedded room and male-only / female-only bathrooms. There is one stand-alone unisex shower.
- Door opening to the bathroom is a minimum of 70cm wide.
- Step-in showers have step threshold heights of between 20-27cm.
- Toilet height is 40cm.
- Wash basin heights are between 79-85cm.
- Floors in all bathrooms are lino.



### Hall, stairs, landings, corridors

All public areas, halls, stairs and landings are well lit with ceiling lights. There is short pile carpet on the stairs, hall and landing.

There is a continuous flight of 14 steps to the first floor with a handrail on both sides.

### Lounge 1

There is a guest lounge on the ground floor which seats 14 people. Flooring is carpet. There is a toy box and games.

The room has a mixture of seating with sofas and soft bucket chairs.

Access is level and entrance is through the dining area which has laminate flooring.

### Lounge 2

There is a second guest lounge on the ground floor near the main entrance which seats 7 people. Flooring is carpet.

There is a book swap, children's library and reference books as well as Nature Spotters board.

The room has a mixture of seating with sofas and soft bucket chairs.

Access is level off the narrow entrance hallway. The door width is 78cm.

### Catering/self-catering

The self-catering kitchen is on the ground floor.

- The sink units and worktops are at a height of 88cm and the hobs are 94cm high.
- Crockery and utensil storage is in wall units at a height of 142cm, on the worktops at a height of 88cm, under the worktops at a height of 39cm.
- There are no steps to the dining area and no fixed seating.
- The dining tables are 75cm high.
- The dining room has laminate flooring.

We are able to cater for varying dietary requirements. Please advise us when making a booking.

- Breakfast is available – please pre-book.
- Packed lunches are available – please pre-book.

### Laundry

The guest laundry is located on the ground floor and access is level.

- Facilities include 2 token operated washing/drying machines which can be purchased from reception (no sinks).
- Flooring is flagstone.
- Drying racks are fixed in position at a height of 182cm and 100cm and hooks are at a height of 182cm.

### Shop

There is a small shop on-site available during reception hours.

### Other useful information

- We have a set of evacuation procedures – if required, someone will come to your room and assist you.
- We welcome trained assistance dogs. A water bowl can be supplied for assistance dogs.
- The nearest hospital with an A&E unit is in Inverness 57 miles away and the nearest doctor's surgery is located in the village close by on Mill Street. Please let us know if you require further information about these.
- WiFi access is free
- We can offer a list of nearby attractions and suggest places to eat.
- Our staff receive accessibility training.

